



**ELECTRONIC COPY**

LG783658585  
Report verification at igi.org



March 14, 2026  
IGI Report Number **LG783658585**  
Description **LABORATORY GROWN DIAMOND**  
Shape and Cutting Style **CUT CORNERED  
RECTANGULAR MIXED CUT**  
Measurements **13.36 X 8.84 X 6.13 MM**  
**GRADING RESULTS**  
Carat Weight **7.00 CARATS**  
Color Grade **D**  
Clarity Grade **VS 2**

**LABORATORY GROWN DIAMOND REPORT**

March 14, 2026  
IGI Report Number **LG783658585**  
Description **LABORATORY GROWN DIAMOND**  
Shape and Cutting Style **CUT CORNERED RECTANGULAR  
MIXED CUT**  
Measurements **13.36 X 8.84 X 6.13 MM**

**GRADING RESULTS**

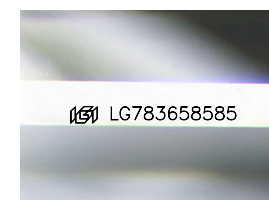
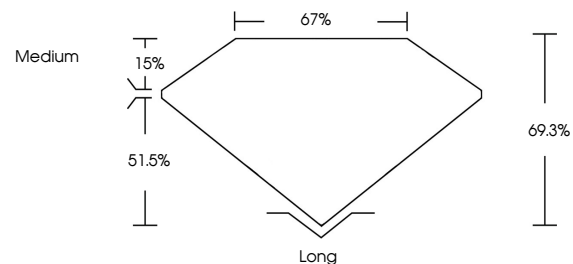
Carat Weight **7.00 CARATS**  
Color Grade **D**  
Clarity Grade **VS 2**

**ADDITIONAL GRADING INFORMATION**

Polish **EXCELLENT**  
Symmetry **EXCELLENT**  
Fluorescence **NONE**  
Inscription(s) **IGI LG783658585**

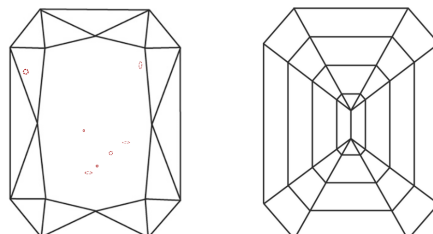
Comments: This Laboratory Grown Diamond was created by Chemical Vapor Deposition (CVD) growth process.  
Type IIa

**PROPORTIONS**



Sample Image Used

**CLARITY CHARACTERISTICS**



**KEY TO SYMBOLS**

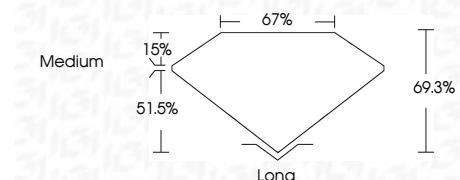
Red symbols indicate internal characteristics.  
Green symbols indicate external characteristics.

**COLOR**

D E F G H I J Faint Very Light Light

**CLARITY**

FL	IF	VS <sup>1-2</sup>	VS <sup>1-2</sup>	SI <sup>1-2</sup>	I <sup>1-3</sup>
Flawless	Internally Flawless	Very Very Slightly Included	Very Slightly Included	Slightly Included	Included



**ADDITIONAL GRADING INFORMATION**

Polish **EXCELLENT**  
Symmetry **EXCELLENT**  
Fluorescence **NONE**  
Inscription(s) **IGI LG783658585**  
Comments: This Laboratory Grown Diamond was created by Chemical Vapor Deposition (CVD) growth process.  
Type IIa



March 14, 2026  
IGI Report No **LG783658585**  
**CUT CORNERED RECT. MIXED CUT**  
**13.36 X 8.84 X 6.13 MM**  
**7.00 CARATS**  
Color Grade **D**  
Clarity Grade **VS 2**  
Depth **69.3%**  
Table **15%**  
Girdle **Medium**  
Culet **Long**  
Polish **EXCELLENT**  
Symmetry **EXCELLENT**  
Fluorescence **NONE**  
Inscription(s) **IGI LG783658585**  
Comments: This Laboratory Grown Diamond was created by Chemical Vapor Deposition (CVD) growth process.  
Type IIa