



**ELECTRONIC COPY**

## LABORATORY GROWN DIAMOND REPORT

|                         |                          |
|-------------------------|--------------------------|
| September 17, 2025      |                          |
| IGI Report Number       | LG733590326              |
| Description             | LABORATORY GROWN DIAMOND |
| Shape and Cutting Style | ROUND BRILLIANT          |
| Measurements            | 9.38 - 9.41 X 5.74 MM    |

## GRADING RESULTS

|               |             |
|---------------|-------------|
| Carat Weight  | 3.10 CARATS |
| Color Grade   | F           |
| Clarity Grade | VS 1        |
| Cut Grade     | IDEAL       |

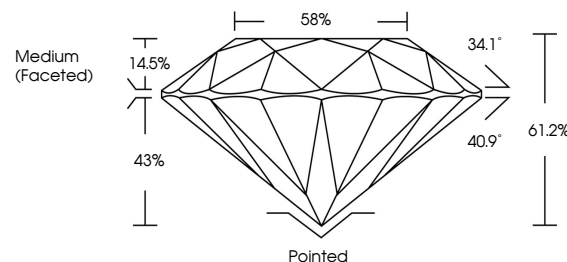
### ADDITIONAL GRADING INFORMATION

|                |                 |
|----------------|-----------------|
| Polish         | EXCELLENT       |
| Symmetry       | EXCELLENT       |
| Fluorescence   | NONE            |
| Inscription(s) | 151 LG733590326 |

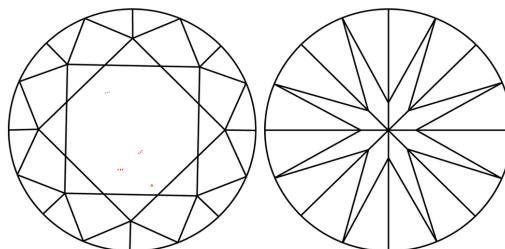
Comments: This Laboratory Grown Diamond was created by Chemical Vapor Deposition (CVD) growth process.  
Type IIa

LG733590326  
Report verification at [lgi.org](https://lgi.org)

## PROPORTIONS

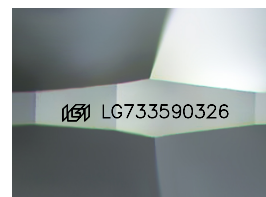


## CLARITY CHARACTERISTICS



### KEY TO SYMBOLS

Red symbols indicate internal characteristics.  
Green symbols indicate external characteristics.



Sample Image Used

## COLOR

D E F G H I J Faint Very Light Light

## CLARITY

IF                      VS<sup>1-2</sup>                      VS<sup>1-2</sup>                      S<sup>1-2</sup>                      |<sup>1-3</sup>

|                        |                                |                           |                      |          |
|------------------------|--------------------------------|---------------------------|----------------------|----------|
| Internally<br>Flawless | Very Very<br>Slightly Included | Very<br>Slightly Included | Slightly<br>Included | Included |
|------------------------|--------------------------------|---------------------------|----------------------|----------|

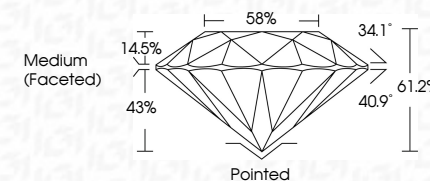
## LABORATORY GROWN DIAMOND REPORT



|                         |                          |
|-------------------------|--------------------------|
| September 17, 2025      |                          |
| IGI Report Number       | LG733590326              |
| Description             | LABORATORY GROWN DIAMOND |
| Shape and Cutting Style | ROUND BRILLIANT          |
| Measurements            | 9.38 - 9.41 X 5.74 MM    |

## GRADING RESULTS

|               |             |
|---------------|-------------|
| Carat Weight  | 3.10 CARATS |
| Color Grade   | F           |
| Clarity Grade | VS 1        |
| Cut Grade     | IDEAL       |



### ADDITIONAL GRADING INFORMATION

|   |   |
|---|---|
| Polish  | EXCELLENT   |
| Symmetry  | EXCELLENT   |
| Fluorescence  | NONE  |
| Inscription(s)  |  LG733590326 |
| <p>Comments: This Laboratory Grown Diamond was created by Chemical Vapor Deposition (CVD) growth process.</p> <p>Type IIa</p> |   |



© IGI 2020, International Gemological Institute

FD - 10 20



THIS DOCUMENT WAS PRODUCED WITH THE FOLLOWING SECURITY MEASURES: SPECIAL DOCUMENT PAPER, INK SCREENS, WATERMARK, BACKGROUND DESIGNS, HOLOGRAM AND OTHER SECURITY FEATURES NOT LISTED AND DO EXCEED DOCUMENT SECURITY INDUSTRY GUIDELINES

**www.igi.org**

September 17, 2025  
 LGI Report No LG733590326  
 ROUND BRILLIANT

|               |                  |
|---------------|------------------|
| Carat Weight  | 3.10 CARATS      |
| Color Grade   | V8 1             |
| Clarity Grade | IDEAL            |
| Cut Grade     | 61.2%            |
| Depth         | 58%              |
| Table         | Medium (Faceted) |
| Girdle        |                  |
| Culet         | Pointed          |
| Polish        | EXCELLENT        |
| Symmetry      | EXCELLENT        |
| Fluorescence  | NONE             |

**Comments:**  
This Laboratory Grown Diamond was  
created by Chemical Vapor Deposition  
(CVD) growth process.