

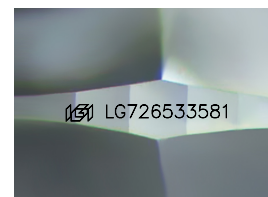
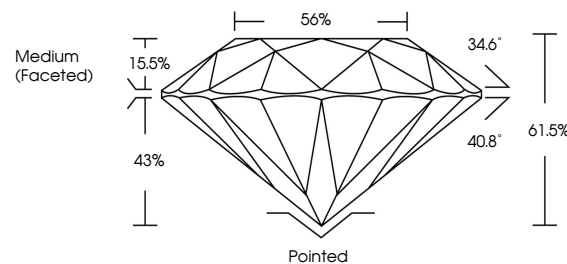


ELECTRONIC COPY

LABORATORY GROWN DIAMOND REPORT

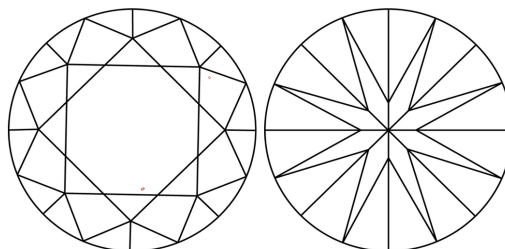
LG726533581
Report verification at igi.org

PROPORTIONS



Sample Image Used

CLARITY CHARACTERISTICS



KEY TO SYMBOLS

Red symbols indicate internal characteristics.
Green symbols indicate external characteristics.

COLOR

D E F G H I J Faint Very Light Light

CLARITY

IF WS¹⁻² VS¹⁻² SI¹⁻² |¹⁻³

Internally Flawless	Very Very Slightly Included	Very Slightly Included	Slightly Included	Included
------------------------	--------------------------------	---------------------------	----------------------	----------

LABORATORY GROWN DIAMOND REPORT



August 4, 2025

IGI Report Number **LG726533581**Description **LABORATORY GROWN DIAMOND**Shape and Cutting Style **ROUND BRILLIANT**

Measurements 9.70 - 9.74 X 5.98 MM

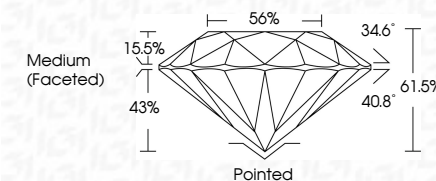
GRADING RESULTS

Carat Weight 3.44 CARATS

Color Grade **E**

Clarity Grade VS 1

Cut Grade **IDEAL**



ADDITIONAL GRADING INFORMATION

Polish **EXCELLENT**Symmetry **EXCELLENT**Fluorescence **NONE**Inscription(s)  LG726533581

Comments: This Laboratory Grown Diamond was created by Chemical Vapor Deposition (CVD) growth process.
Type IIa



© IGI 2020, International Gemological Institute

FD - 10 20

www.igi.org

THIS DOCUMENT WAS PRODUCED WITH THE FOLLOWING SECURITY MEASURES: SPECIAL DOCUMENT PAPER, INK SCREENS, WATERMARK BACKGROUND DESIGNS, HOLOGRAM AND OTHER SECURITY FEATURES NOT LISTED AND DO EXCEED DOCUMENT SECURITY INDUSTRY GUIDELINES

August 4, 2025	August 4, 2025	3.44 CARATS
(G) Report No: G272653581	(G) Report No: G272653581	
ROUND BRILLIANT	ROUND BRILLIANT	
9.70 - 9.74 X 5.98 MM	9.70 - 9.74 X 5.98 MM	
Carat Weight	Carat Weight	
Color Grade	Color Grade	
Clarity Grade	Clarity Grade	
Cut Grade	Cut Grade	
Depth	Depth	
Table	Table	
Girdle	Girdle	
Culet	Culet	
Polish	Polish	
Symmetry	Symmetry	
Fluorescence	Fluorescence	
Inscriptions(s)	Inscriptions(s)	
Comments:	Comments:	
The Laboratory Grown Diamond was created by Chemical Vapor Deposition (CVD) growth process.	The Laboratory Grown Diamond was created by Chemical Vapor Deposition (CVD) growth process.	
Type IIA	Type IIA	