

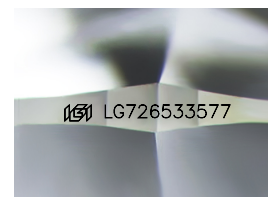
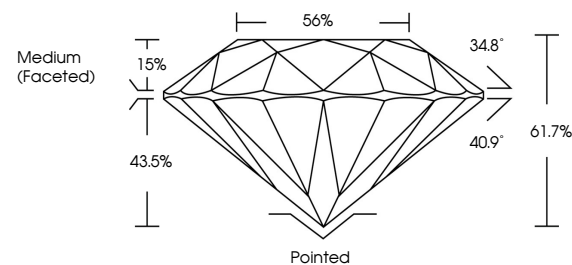


ELECTRONIC COPY

LABORATORY GROWN DIAMOND REPORT

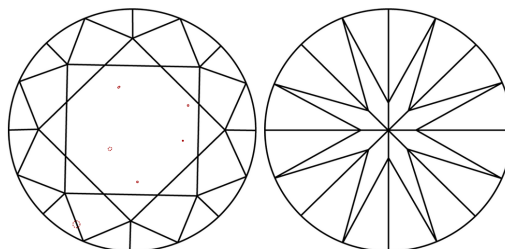
LG726533577
Report verification at [igi.org](https://www.igi.org)

PROPORTIONS



Sample Image Used

CLARITY CHARACTERISTICS



KEY TO SYMBOLS

Red symbols indicate internal characteristics.
Green symbols indicate external characteristics.

COLOR

D E F G H I J Faint Very Light Light

CLARITY

IF WS¹⁻² VS¹⁻² SI¹⁻² |¹⁻³

Internally Flawless	Very Very Slightly Included	Very Slightly Included	Slightly Included	Included
------------------------	--------------------------------	---------------------------	----------------------	----------

LABORATORY GROWN DIAMOND REPORT



August 4, 2025

IGI Report Number **LG726533577**Description **LABORATORY GROWN DIAMOND**Shape and Cutting Style **ROUND BRILLIANT**

Measurements 9.90 - 9.96 X 6.13 MM

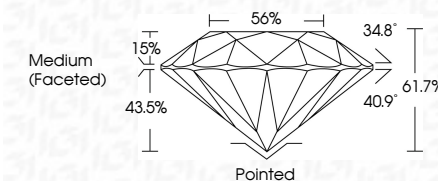
GRADING RESULTS

Carat Weight **3.70 CARATS**

Color Grade

Clarity Grade VS 1

Cut Grade **IDEAL**



ADDITIONAL GRADING INFORMATION

Polish **EXCELLENT**Symmetry **EXCELLENT**Fluorescence **NONE**Inscription(s)  LG726533577

Comments: This Laboratory Grown Diamond was created by Chemical Vapor Deposition (CVD) growth process.
Type IIa



© IGI 2020, International Gemological Institute

FD - 10 20

www.igi.org

THIS DOCUMENT WAS PRODUCED WITH THE FOLLOWING SECURITY MEASURES: SPECIAL DOCUMENT PAPER, INK SCREENS, WATERMARK BACKGROUND DESIGNS, HOLOGRAM AND OTHER SECURITY FEATURES NOT LISTED AND DO EXCEED DOCUMENT SECURITY INDUSTRY GUIDELINES

August 4, 2025	GI Report No LG72635577	3.70 CARATS
ROUND BRILLIANT		E
9.0 - 9.6 X 6.13 MM		VS 1
Carat Weight		IDEAL
Color Grade		61.7%
Clarity Grade		56%
Cur Grade		Medium (Faceted)
Depth		Pointed
Table		EXCELLENT
Girdle		EXCELLENT
		NONE
		lg# LG72635577
Comments:		
This Laboratory Grown Diamond was created by Chemical Vapor Deposition (CVD) growth process.		
Type IIA		