



# INTERNATIONAL GEMOLOGICAL INSTITUTE

ELECTRONIC COPY

## LABORATORY GROWN DIAMOND REPORT

May 31, 2025  
IGI Report Number **LG709536701**  
Description **LABORATORY GROWN DIAMOND**  
Shape and Cutting Style **PRINCESS CUT**  
Measurements **4.76 X 4.72 X 3.64 MM**

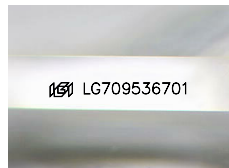
### GRADING RESULTS

Carat Weight **0.70 CARAT**  
Color Grade **E**  
Clarity Grade **VS 2**

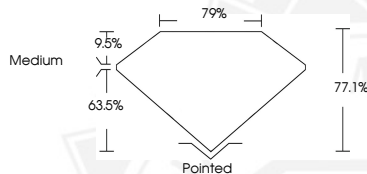
### ADDITIONAL GRADING INFORMATION

Polish **EXCELLENT**  
Symmetry **VERY GOOD**  
Fluorescence **NONE**  
Inscription(s) **IGI LG709536701**

Comments: This Laboratory Grown Diamond was created by Chemical Vapor Deposition (CVD) growth process. Type IIa



Sample Image Used



May 31, 2025

IGI Report Number **LG709536701**  
**PRINCESS CUT**  
**LABORATORY GROWN DIAMOND**  
**4.76 X 4.72 X 3.64 MM**  
Carat Weight **0.70 CARAT**  
Color Grade **E**  
Clarity Grade **VS 2**  
Polish **EXCELLENT**  
Symmetry **VERY GOOD**  
Fluorescence **NONE**  
Inscription(s) **IGI LG709536701**

Comments: This Laboratory Grown Diamond was created by Chemical Vapor Deposition (CVD) growth process. Type IIa



May 31, 2025

IGI Report Number **LG709536701**  
**PRINCESS CUT**  
**LABORATORY GROWN DIAMOND**  
**4.76 X 4.72 X 3.64 MM**  
Carat Weight **0.70 CARAT**  
Color Grade **E**  
Clarity Grade **VS 2**  
Polish **EXCELLENT**  
Symmetry **VERY GOOD**  
Fluorescence **NONE**  
Inscription(s) **IGI LG709536701**

Comments: This Laboratory Grown Diamond was created by Chemical Vapor Deposition (CVD) growth process. Type IIa



THIS DOCUMENT WAS PRODUCED WITH THE FOLLOWING SECURITY MEASURES: SPECIAL DOCUMENT PAPER, INK SCREENS, WATERMARK, BACKGROUND DESIGN, HOLOGRAM AND OTHER SECURITY FEATURES NOT LISTED AND DO EXCEED DOCUMENT SECURITY INDUSTRY GUIDELINES.

For terms & conditions and to verify this report, please visit [www.igi.org](http://www.igi.org)