



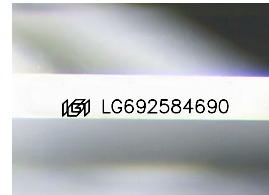
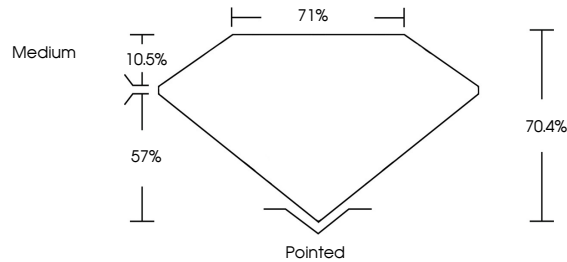
**INTERNATIONAL  
GEMOLOGICAL  
INSTITUTE**

**ELECTRONIC COPY**

## LABORATORY GROWN DIAMOND REPORT

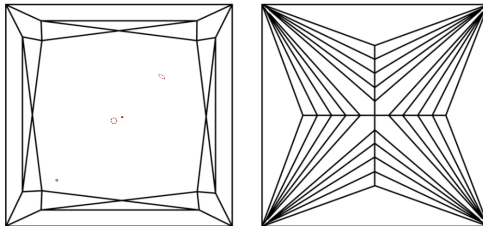
LG692584690  
Report verification at [igi.org](https://igi.org)

## PROPORTIONS



Sample Image Used

## CLARITY CHARACTERISTICS



## KEY TO SYMBOLS

Red symbols indicate internal characteristics.  
Green symbols indicate external characteristics.

## COLOR

D E F G H I J      Faint      Very Light      Light

## CLARITY

IF                      WS<sup>1-2</sup>                      VS<sup>1-2</sup>                      SI<sup>1-2</sup>                      I<sup>1-3</sup>

Internally Flawless	Very Very Slightly Included	Very Slightly Included	Slightly Included	Included
------------------------	--------------------------------	---------------------------	----------------------	----------



© IGI 2020, International Gemological Institute

FD - 10 20

## LABORATORY GROWN DIAMOND REPORT



March 25, 2025

IGI Report Number LG692584690

Description	LABORATORY GROWN DIAMOND
-------------	--------------------------

Shape and Cutting Style **PRINCESS CUT**

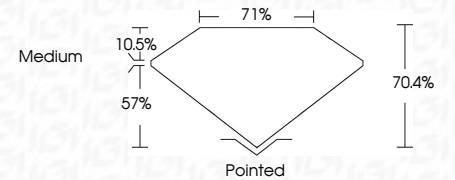
Measurements **8.88 X 8.67 X 6.10 MM**

## GRADING RESULTS

Carat Weight **4.03 CARATS**

Color Grade **D**

Clarity Grade VS 2



### ADDITIONAL GRADING INFORMATION

Polish **EXCELLENT**Symmetry **EXCELLENT**Fluorescence **NONE**Inscription(s)  LG692584690

Comments: This Laboratory Grown Diamond was created by Chemical Vapor Deposition (CVD) growth process.  
Type IIa



IGI

<b>March 26, 2025</b>	<b>IGI Report No IGA9284690</b>	<b>4.03 CARATS</b>	<b>D</b>	<b>VSI 2</b>	<b>70.6%</b>	<b>71%</b>	<b>Medium</b>	<b>Poished</b>	<b>EXCELLENT</b>	<b>EXCELLENT</b>	<b>NONE</b>	<b>I091 IGA9284690</b>
<b>PRINCESS CUT</b>	<b>8.89 X 8.67 X 6.10 MM</b>	<b>Carat Weight</b>	<b>Color Grade</b>	<b>Clarity Grade</b>	<b>Depth</b>	<b>Table</b>	<b>Girdle</b>	<b>Culet</b>	<b>Polish</b>	<b>Symmetry</b>	<b>Fluorescence</b>	<b>Inscriptions</b>
<b>Comments:</b>												
This Laboratory Grown Diamond was created by Chemical Vapor Deposition (CVD) growth process.												
Type IIa												

This Laboratory Grown Diamond was created by Chemical Vapor Deposition (CVD) growth process.  
Type IIa