

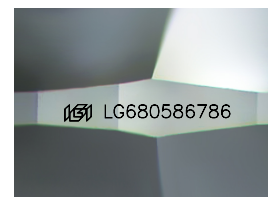
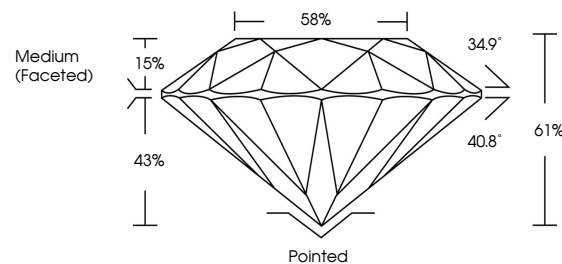


**ELECTRONIC COPY**

## LABORATORY GROWN DIAMOND REPORT

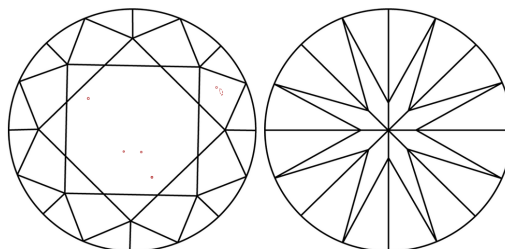
LG680586786  
Report verification at [igi.org](https://igi.org)

## PROPORTIONS



Sample Image Used

## CLARITY CHARACTERISTICS



### KEY TO SYMBOLS

Red symbols indicate internal characteristics.  
Green symbols indicate external characteristics.

## COLOR

D E F G H I J Faint Very Light Light

## CLARITY

IF WS<sup>1-2</sup> VS<sup>1-2</sup> SI<sup>1-2</sup> |<sup>1-3</sup>

Internally Flawless	Very Very Slightly Included	Very Slightly Included	Slightly Included	Included
------------------------	--------------------------------	---------------------------	----------------------	----------



February 12, 2025

IGI Report Number **LG680586786**

Description	LABORATORY GROWN DIAMOND
-------------	--------------------------

Shape and Cutting Style **ROUND BRILLIANT**

Measurements 8.94 - 8.99 X 5.47 MM

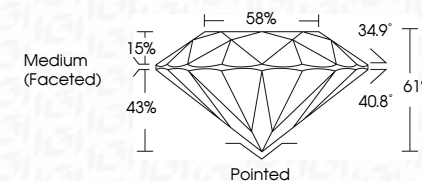
## GRADING RESULTS

Carat Weight **2.68 CARATS**

Color Grade **E**

Clarity Grade VS 2

Cut Grade **IDEAL**



### ADDITIONAL GRADING INFORMATION

Polish **EXCELLENT**Symmetry **EXCELLENT**Fluorescence NONEInscription(s)  LG680586786

Comments: This Laboratory Grown Diamond was created by Chemical Vapor Deposition (CVD) growth process.  
Type IIa



© IGI 2020, International Gemological Institute

FD - 10 20



THIS DOCUMENT WAS PRODUCED WITH THE FOLLOWING SECURITY MEASURES: SPECIAL DOCUMENT PAPER, INK SCREENS, WATERMARK, BACKGROUND DESIGNS, HOLOGRAM, AND OTHER SECURITY FEATURES NOT LISTED AND DO EXCEED DOCUMENT SECURITY INDUSTRY GUIDELINES.

**www.igi.org**

February 12, 2025	2.68 CARATS
GI Report No. LG580656786	E
ROUND BRILLIANT	VS 2
ROUND	IDEAL
14.00 x 9.95 x 5.67 MM	61%
	58%
	Medium (Fossilized)
	Polished
	EXCELLENT
	EXCELLENT
	NONE
	1691 LG580656786

Comments:  
 The Laboratory Grown Diamond was  
 confirmed by Laser Raman Spectroscopy  
 (LRS) to be a CVD growth process.  
 type IIG