

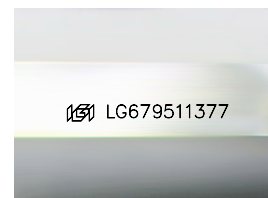
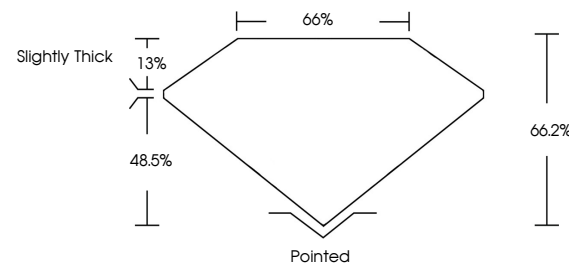


ELECTRONIC COPY

LABORATORY GROWN DIAMOND REPORT

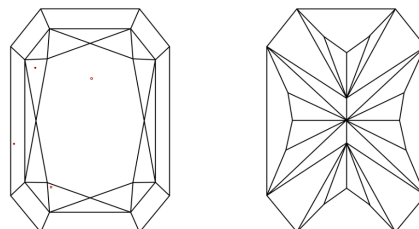
LG679511377
Report verification at igi.org

PROPORTIONS



Sample Image Used

CLARITY CHARACTERISTICS



KEY TO SYMBOLS

Red symbols indicate internal characteristics.
Green symbols indicate external characteristics.

COLOR

D E F G H I J Faint Very Light Light

CLARITY

IF VWS¹⁻² VS¹⁻² SI¹⁻² I¹⁻³

Internally Flawless	Very Very Slightly Included	Very Slightly Included	Slightly Included	Included
------------------------	--------------------------------	---------------------------	----------------------	----------

LABORATORY GROWN DIAMOND REPORT



January 26, 2025

IGI Report Number **LG679511377**Description **LABORATORY GROWN DIAMOND**

Shape and Cutting Style

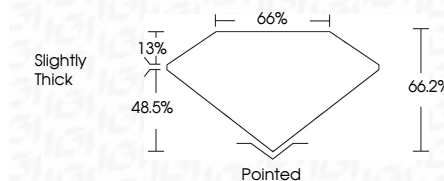
Measurements 11.35 X 7.98 X 5.28 MM

GRADING RESULTS

Carat Weight **4.20 CARATS**

Color Grade E

Clarity Grade VS 1



ADDITIONAL GRADING INFORMATION

Polish **EXCELLENT**Symmetry **EXCELLENT**Fluorescence NONEInscription(s) LG679511377

Comments: This Laboratory Grown Diamond was created by Chemical Vapor Deposition (CVD) growth process.
Type IIa



© IGI 2020, International Gemological Institute

FD - 10 20

www.igi.org

THIS DOCUMENT WAS PRODUCED WITH THE FOLLOWING SECURITY MEASURES: SPECIAL DOCUMENT PAPER, INK SCREENS, WATERMARK, BACKGROUND DESIGNS, HOLOGRAM AND OTHER SECURITY FEATURES NOT LISTED AND DO EXCEED DOCUMENT SECURITY INDUSTRY GUIDELINES

January 26, 2025	Report No. LG279511377
CU CONVERTED RECT. MODIFIED BRILLIANT	
1.35 x 7.98 x 5.28 MM	
Carat Weight	4.20 CARATS
Color Grade	E
Clarity Grade	VS 1
Depth	66.2%
Table	65%
Girdle	Slightly Thick
Culet	Pointed
Polish	EXCELLENT
Symmetry	EXCELLENT
Fluorescence	NONE
Inscriptions(s)	1691 LG279511377
Comments:	
	The Laboratory Grown Diamond was Grown by Chemical Vapor Deposition (CVD) growth process.
	Type IIG