

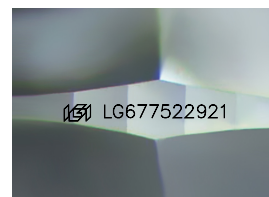
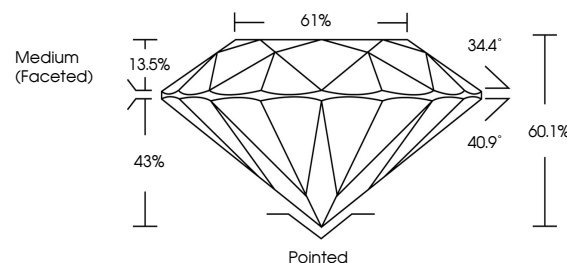


**ELECTRONIC COPY**

## LABORATORY GROWN DIAMOND REPORT

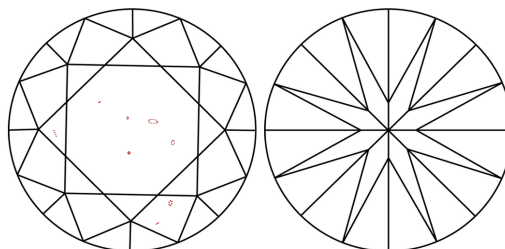
LG677522921  
Report verification at [igi.org](https://igi.org)

## PROPORTIONS



Sample Image Used

## CLARITY CHARACTERISTICS



### KEY TO SYMBOLS

Red symbols indicate internal characteristics.  
Green symbols indicate external characteristics.

## COLOR

D E F G H I J Faint Very Light Light

## CLARITY

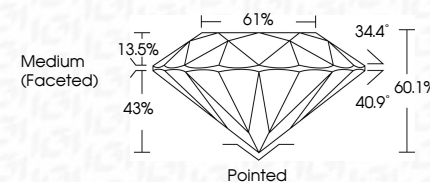
IF WS<sup>1-2</sup> VS<sup>1-2</sup> SI<sup>1-2</sup> |<sup>1-3</sup>

|                        |                                |                           |                      |          |
|------------------------|--------------------------------|---------------------------|----------------------|----------|
| Internally<br>Flawless | Very Very<br>Slightly Included | Very<br>Slightly Included | Slightly<br>Included | Included |
|------------------------|--------------------------------|---------------------------|----------------------|----------|

## LABORATORY GROWN DIAMOND REPORT



|                         |                          |
|-------------------------|--------------------------|
| January 17, 2025        |                          |
| IGI Report Number       | LG677522921              |
| Description             | LABORATORY GROWN DIAMOND |
| Shape and Cutting Style | ROUND BRILLIANT          |
| Measurements            | 8.99 - 9.01 X 5.41 MM    |
| <b>GRADING RESULTS</b>  |                          |
| Carat Weight            | 2.70 CARATS              |
| Color Grade             | E                        |
| Clarity Grade           | VS 2                     |
| Cut Grade               | EXCELLENT                |



### ADDITIONAL GRADING INFORMATION

|   |   |
|---|---|
| Polish  | EXCELLENT   |
| Symmetry  | EXCELLENT   |
| Fluorescence  | NONE  |
| Inscription(s)  |  LG677522921 |
| <p>Comments: This Laboratory Grown Diamond was created by Chemical Vapor Deposition (CVD) growth process.</p> <p>Type IIa</p> |   |



© IGI 2020, International Gemological Institute

FD - 10 20



THIS DOCUMENT WAS PRODUCED WITH THE FOLLOWING SECURITY MEASURES: SPECIAL DOCUMENT PAPER, INK SCREENS, WATERMARK, BACKGROUND DESIGNS, HOLOGRAM AND OTHER SECURITY FEATURES NOT LISTED AND DO EXCEED DOCUMENT SECURITY INDUSTRY GUIDELINES

**www.igi.org**

January 17, 2025  
GI Report No LG677522921  
ROUND BRILLIANT

ROUND BRILLIANT  
3.99 - 9.01 X 5.41 MM

3.99 - 9.01 X 5.41 MM  
Carat Weight  
2.70 CARATS

| Catali Weig II | Z/0 CARAIS |
|----------------|------------|
| Color Grade    | E          |

|                    | Clarity Grade | VS 2 |
|--------------------|---------------|------|
| Colorless          |               |      |
| Slightly Tinted    |               |      |
| Tinted             |               |      |
| Lightly Tinted     |               |      |
| Darkly Tinted      |               |      |
| Very Darkly Tinted |               |      |
| Black              |               |      |

| Out Grade | EXCELLENT |
|-----------|-----------|
| Depth     | 40.10     |

|       |       |
|-------|-------|
| Depth | 60.1% |
| Table | 61%   |

| Girdle | Medium (Faceted) | Clasp |
|--------|------------------|-------|
|        |                  |       |

7  
4  
1  
6

|        |           |
|--------|-----------|
| Culet  | Pointed   |
| Polish | EXCELLENT |

EXCELLENT

EXCELLENT

Symmetry

|                |                 |
|----------------|-----------------|
| Fluorescence   | NONE            |
| Inscription(s) | 1811 G-67752921 |

17/07/2017

**Comments:**  
This Laboratory Grown Diamond was

created by Chemical Vapor Deposition (CVD) growth process.

Type IIa