



**ELECTRONIC COPY**

LG670445510  
Report verification at igi.org



December 23, 2024

IGI Report Number **LG670445510**

Description **LABORATORY GROWN DIAMOND**

Shape and Cutting Style **PRINCESS CUT**

Measurements **7.69 X 7.53 X 5.53 MM**

**GRADING RESULTS**

Carat Weight **2.80 CARATS**

Color Grade **E**

Clarity Grade **VS 2**

December 23, 2024  
IGI Report Number **LG670445510**  
Description **LABORATORY GROWN DIAMOND**  
Shape and Cutting Style **PRINCESS CUT**  
Measurements **7.69 X 7.53 X 5.53 MM**

**GRADING RESULTS**

Carat Weight **2.80 CARATS**

Color Grade **E**

Clarity Grade **VS 2**

**ADDITIONAL GRADING INFORMATION**

Polish **EXCELLENT**

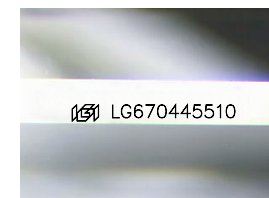
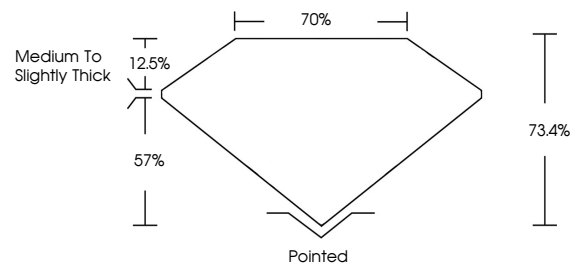
Symmetry **EXCELLENT**

Fluorescence **NONE**

Inscription(s) **IGI LG670445510**

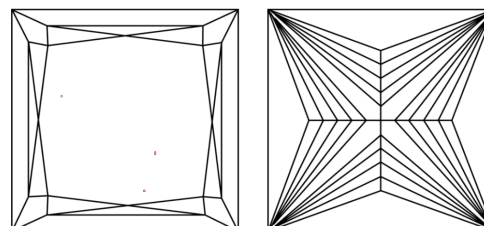
Comments: This Laboratory Grown Diamond was created by Chemical Vapor Deposition (CVD) growth process.  
Type IIa

**PROPORTIONS**



Sample Image Used

**CLARITY CHARACTERISTICS**



**KEY TO SYMBOLS**

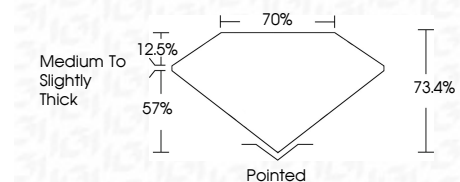
Red symbols indicate internal characteristics.  
Green symbols indicate external characteristics.

**COLOR**

D E F G H I J Faint Very Light Light

**CLARITY**

IF	VS <sup>1-2</sup>	VS <sup>1-2</sup>	SI <sup>1-2</sup>	I <sup>1-3</sup>
Internally Flawless	Very Very Slightly Included	Very Slightly Included	Slightly Included	Included



**ADDITIONAL GRADING INFORMATION**

Polish **EXCELLENT**

Symmetry **EXCELLENT**

Fluorescence **NONE**

Inscription(s) **IGI LG670445510**

Comments: This Laboratory Grown Diamond was created by Chemical Vapor Deposition (CVD) growth process.  
Type IIa



**IGI**



December 23, 2024  
IGI Report No. **LG670445510**  
**PRINCESS CUT**  
**7.69 X 7.53 X 5.53 MM**  
**2.80 CARATS**  
**E**  
**VS 2**  
**73.4%**  
**70%**  
**Medium to Slightly Thick**  
**Pointed**  
**EXCELLENT**  
**EXCELLENT**  
**NONE**  
**IGI LG670445510**  
Comments: This Laboratory Grown Diamond was created by Chemical Vapor Deposition (CVD) growth process.  
Type IIa