



ELECTRONIC COPY

LABORATORY GROWN DIAMOND REPORT

| | |
|-------------------------|--------------------------|
| October 1, 2024 | |
| IGI Report Number | LG655428045 |
| Description | LABORATORY GROWN DIAMOND |
| Shape and Cutting Style | EMERALD CUT |
| Measurements | 11.14 X 7.45 X 5.07 MM |

GRADING RESULTS

| | |
|---------------|-------------|
| Carat Weight | 4.11 CARATS |
| Color Grade | E |
| Clarity Grade | VS 2 |

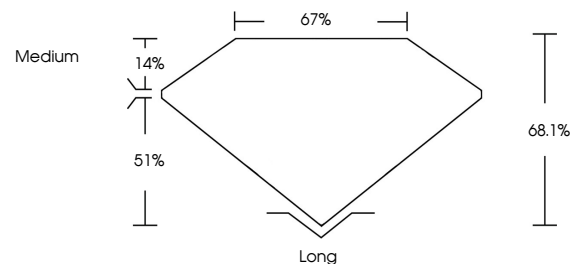
ADDITIONAL GRADING INFORMATION

| | |
|----------------|----------------|
| Polish | EXCELLENT |
| Symmetry | EXCELLENT |
| Fluorescence | NONE |
| Inscription(s) | 15 LG655428045 |

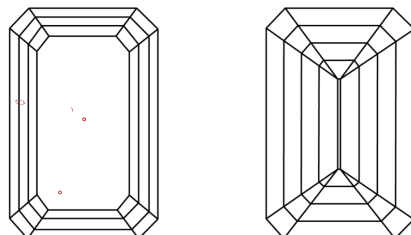
Comments: This Laboratory Grown Diamond was created by Chemical Vapor Deposition (CVD) growth process.
Type IIa

LG655428045
Report verification at lgi.org

PROPORTIONS

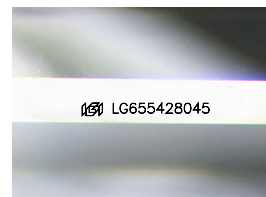


CLARITY CHARACTERISTICS



KEY TO SYMBOLS

Red symbols indicate internal characteristics.
Green symbols indicate external characteristics.



Sample Image Used

COLOR

D E F G H I J Faint Very Light Light

CLARITY

| IF | VVS ^{1,2} | VS ^{1,2} | SI ^{1,2} | I ^{1,3} |
|---------------------|-----------------------------|------------------------|-------------------|------------------|
| Internally Flawless | Very Very Slightly Included | Very Slightly Included | Slightly Included | Included |



© IGI 2020, International Gemological Institute

FD - 10 20

www.igi.org

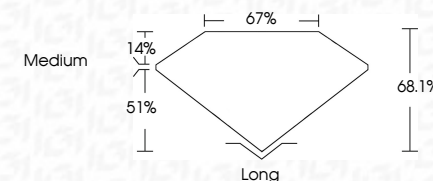
LABORATORY GROWN DIAMOND REPORT



| | |
|-------------------------|--------------------------|
| October 1, 2024 | |
| IGI Report Number | LG655428045 |
| Description | LABORATORY GROWN DIAMOND |
| Shape and Cutting Style | EMERALD CUT |
| Measurements | 11.14 X 7.45 X 5.07 MM |

GRADING RESULTS

| | |
|---------------|-------------|
| Carat Weight | 4.11 CARATS |
| Color Grade | E |
| Clarity Grade | VS 2 |



ADDITIONAL GRADING INFORMATION

| | |
|---|---|
| Polish | EXCELLENT |
| Symmetry | EXCELLENT |
| Fluorescence | NONE |
| Inscription(s) |  LG655428045 |
| <p>Comments: This Laboratory Grown Diamond was created by Chemical Vapor Deposition (CVD) growth process.</p> <p>Type IIa</p> | |



IG

October 1, 2024
GI Report No LG655428045
EMERALD CITE

| | | | | | |
|------------------------|-------------|-------|--------|-----------|------|
| 11.14 x 7.45 x 5.07 MM | 4.11 CARATS | VS 2 | Long | EXCELLENT | None |
| Color Grade | | 68.1% | | EXCELLENT | None |
| Clarity Grade | | 67% | Medium | | None |
| Depth | | | | | None |
| Table | | | | | None |
| Grade | | | | | None |
| Culet | | | | | None |
| Polish | | | | | None |
| Symmetry | | | | | None |
| Fluorescence | | | | | None |

Comments:
This Laboratory Grown Diamond was
created by Chemical Vapor Deposition
(CVD) growth process.