



INTERNATIONAL GEMOLOGICAL INSTITUTE

ELECTRONIC COPY

LG652443124

LABORATORY GROWN DIAMOND REPORT

September 15, 2024

IGI Report Number

LG652443124

Description

LABORATORY GROWN DIAMOND

Shape and Cutting Style

ROUND BRILLIANT

Measurements

4.88 - 4.90 X 2.98 MM

GRADING RESULTS

Carat Weight

0.43 CARAT

Color Grade

D

Clarity Grade

VS 1

Cut Grade

IDEAL

ADDITIONAL GRADING INFORMATION

Polish

EXCELLENT

Symmetry

EXCELLENT

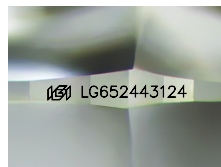
Fluorescence

NONE

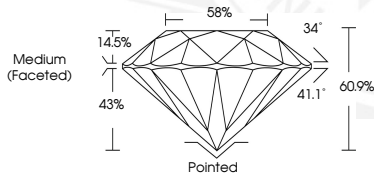
Inscription(s)

IGI LG652443124

Comments: This Laboratory Grown Diamond was created by Chemical Vapor Deposition (CVD) growth process. Type IIa



Sample Image Used



September 15, 2024

IGI Report Number LG652443124

ROUND BRILLIANT

LABORATORY GROWN DIAMOND

4.88 - 4.90 X 2.98 MM

Carat Weight 0.43 CARAT

Color Grade D

Clarity Grade VS 1

Cut Grade IDEAL

Polish EXCELLENT

Symmetry EXCELLENT

Fluorescence NONE

Inscription(s) IGI LG652443124

Comments: This Laboratory Grown Diamond was created by Chemical Vapor Deposition (CVD) growth process. Type IIa



September 15, 2024

IGI Report Number LG652443124

ROUND BRILLIANT

LABORATORY GROWN DIAMOND

4.88 - 4.90 X 2.98 MM

Carat Weight 0.43 CARAT

Color Grade D

Clarity Grade VS 1

Cut Grade IDEAL

Polish EXCELLENT

Symmetry EXCELLENT

Fluorescence NONE

Inscription(s) IGI LG652443124

Comments: This Laboratory Grown Diamond was created by Chemical Vapor Deposition (CVD) growth process. Type IIa



THIS DOCUMENT WAS PRODUCED WITH THE FOLLOWING SECURITY MEASURES: SPECIAL DOCUMENT PAPER, INK SCREENS, WATERMARK, BACKGROUND DESIGNS, HOLOGRAM AND OTHER SECURITY FEATURES NOT LISTED AND DO EXCEED DOCUMENT SECURITY INDUSTRY GUIDELINES.

For terms & conditions and to verify this report, please visit www.igi.org