

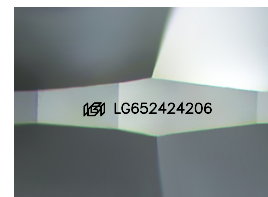
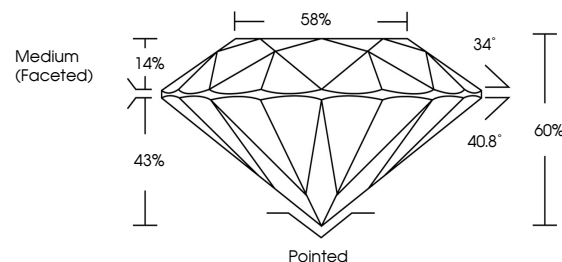


ELECTRONIC COPY

LABORATORY GROWN DIAMOND REPORT

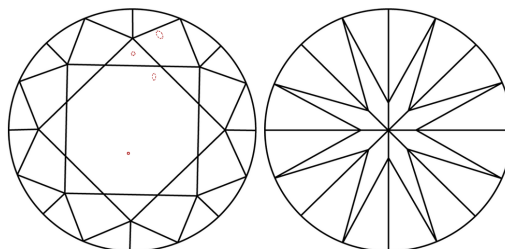
LG652424206
Report verification at lgi.org

PROPORTIONS



Sample Image Used

CLARITY CHARACTERISTICS



KEY TO SYMBOLS

Red symbols indicate internal characteristics.
Green symbols indicate external characteristics.

COLOR

D E F G H I J Faint Very Light Light

CLARITY

IF	VVS ¹⁻²	VS ¹⁻²	SI ¹⁻²	I ¹⁻³
Internally Flawless	Very Very Slightly Included	Very Slightly Included	Slightly Included	Included



© IGI 2020, International Gemological Institute

FD - 10 20

www.igi.org

LABORATORY GROWN DIAMOND REPORT



September 18, 2024

IGI Report Number LG652424206

Description **LABORATORY GROWN DIAMOND**Shape and Cutting Style **ROUND BRILLIANT**

Measurements 8.91 - 8.97 X 5.37 MM

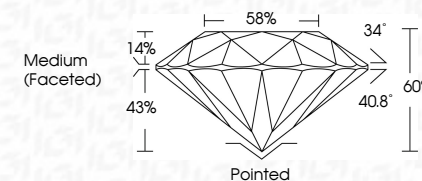
GRADING RESULTS

Carat Weight **2.59 CARATS**

Color Grade

Clarity Grade SI 1

Cut Grade **IDEAL**



ADDITIONAL GRADING INFORMATION

Polish **EXCELLENT**Symmetry **EXCELLENT**Fluorescence **NONE**Inscription(s) LG652424200

Comments: This Laboratory Grown Diamond was created by Chemical Vapor Deposition (CVD) growth process.
Type IIa



September 18, 2024
GI Report No LG652424206
ROUND BRILLIANT

ROUND BRILLIANT	9.91 - 9.97 X 5.37 MM	2.59 CARATS	
	Carat Weight	E	
	Color Grade		
	Clarity Grade	S1	
	Cut Grade	IDEAL	
	Depth	60%	
	Table	58%	
	Grade		Medium (Excellent)

	Pointed	EXCELLENT	EXCELLENT	NONE
Culet				
Polish				
Symmetry				
Fluorescence				

Comments:
This Laboratory Grown Diamond was created by Chemical Vapor Deposition (CVD) growth process.