



# INTERNATIONAL GEMOLOGICAL INSTITUTE

ELECTRONIC COPY

LG651433564



September 10, 2024

IGI Report Number LG651433564  
ROUND BRILLIANT  
LABORATORY GROWN DIAMOND  
4.84 - 4.86 X 3.01 MM

Carat Weight 0.43 CARAT  
Color Grade D  
Clarity Grade VS 2  
Cut Grade IDEAL  
Polish EXCELLENT  
Symmetry EXCELLENT  
Fluorescence NONE  
Inscription(s) IGI LG651433564

Comments: This Laboratory Grown Diamond was created by Chemical Vapor Deposition (CVD) growth process. Type IIa

## LABORATORY GROWN DIAMOND REPORT

September 10, 2024

IGI Report Number LG651433564

Description LABORATORY GROWN DIAMOND

Shape and Cutting Style ROUND BRILLIANT

Measurements 4.84 - 4.86 X 3.01 MM

### GRADING RESULTS

Carat Weight 0.43 CARAT

Color Grade D

Clarity Grade VS 2

Cut Grade IDEAL

### ADDITIONAL GRADING INFORMATION

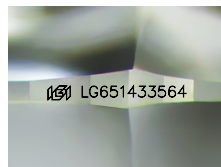
Polish EXCELLENT

Symmetry EXCELLENT

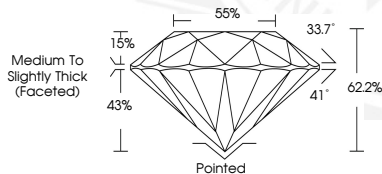
Fluorescence NONE

Inscription(s) IGI LG651433564

Comments: This Laboratory Grown Diamond was created by Chemical Vapor Deposition (CVD) growth process. Type IIa



Sample Image Used



September 10, 2024

IGI Report Number LG651433564  
ROUND BRILLIANT  
LABORATORY GROWN DIAMOND  
4.84 - 4.86 X 3.01 MM

Carat Weight 0.43 CARAT  
Color Grade D  
Clarity Grade VS 2  
Cut Grade IDEAL  
Polish EXCELLENT  
Symmetry EXCELLENT  
Fluorescence NONE  
Inscription(s) IGI LG651433564

Comments: This Laboratory Grown Diamond was created by Chemical Vapor Deposition (CVD) growth process. Type IIa



THIS DOCUMENT WAS PRODUCED WITH THE FOLLOWING SECURITY MEASURES: SPECIAL DOCUMENT PAPER, INK SCREENS, WATERMARK, BACKGROUND DESIGNS, HOLOGRAM AND OTHER SECURITY FEATURES NOT LISTED AND DO EXCEED DOCUMENT SECURITY INDUSTRY GUIDELINES.

For terms & conditions and to verify this report, please visit [www.igi.org](http://www.igi.org)