



# INTERNATIONAL GEMOLOGICAL INSTITUTE

ELECTRONIC COPY

LG650404205



September 9, 2024

IGI Report Number LG650404205

EMERALD CUT

LABORATORY GROWN DIAMOND

6.22 X 4.23 X 2.92 MM

Carat Weight 0.72 CARAT

Color Grade D

Clarity Grade SI 1

Polish EXCELLENT

Symmetry EXCELLENT

Fluorescence NONE

Inscription(s) IGI LG650404205

Comments: This Laboratory Grown Diamond was created by Chemical Vapor Deposition (CVD) growth process. Type IIa

## LABORATORY GROWN DIAMOND REPORT

September 9, 2024

IGI Report Number

LG650404205

Description

LABORATORY GROWN DIAMOND

Shape and Cutting Style

EMERALD CUT

Measurements

6.22 X 4.23 X 2.92 MM

### GRADING RESULTS

Carat Weight

0.72 CARAT

Color Grade

D

Clarity Grade

SI 1

### ADDITIONAL GRADING INFORMATION

Polish

EXCELLENT

Symmetry

EXCELLENT

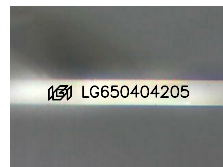
Fluorescence

NONE

Inscription(s)

IGI LG650404205

Comments: This Laboratory Grown Diamond was created by Chemical Vapor Deposition (CVD) growth process. Type IIa



Sample Image Used



September 9, 2024

IGI Report Number LG650404205

EMERALD CUT

LABORATORY GROWN DIAMOND

6.22 X 4.23 X 2.92 MM

Carat Weight 0.72 CARAT

Color Grade D

Clarity Grade SI 1

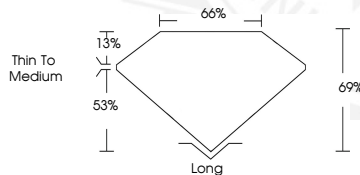
Polish EXCELLENT

Symmetry EXCELLENT

Fluorescence NONE

Inscription(s) IGI LG650404205

Comments: This Laboratory Grown Diamond was created by Chemical Vapor Deposition (CVD) growth process. Type IIa



THIS DOCUMENT WAS PRODUCED WITH THE FOLLOWING SECURITY MEASURES: SPECIAL DOCUMENT PAPER, INK SCREENS, WATERMARK, BACKGROUND DESIGNS, HOLOGRAM AND OTHER SECURITY FEATURES NOT LISTED AND DO EXCEED DOCUMENT SECURITY INDUSTRY GUIDELINES.

For terms & conditions and to verify this report, please visit [www.igi.org](http://www.igi.org)