



# INTERNATIONAL GEMOLOGICAL INSTITUTE

ELECTRONIC COPY

LG649421769



August 30, 2024  
IGI Report Number LG649421769  
EMERALD CUT  
LABORATORY GROWN DIAMOND  
6.40 X 4.36 X 2.82 MM  
Carat Weight 0.77 CARAT  
Color Grade D  
Clarity Grade VS 2  
Polish EXCELLENT  
Symmetry EXCELLENT  
Fluorescence NONE  
Inscription(s) LG649421769  
Comments: This Laboratory Grown Diamond was created by Chemical Vapor Deposition (CVD) growth process. Type IIa

## LABORATORY GROWN DIAMOND REPORT

August 30, 2024  
IGI Report Number LG649421769  
Description LABORATORY GROWN DIAMOND  
Shape and Cutting Style EMERALD CUT  
Measurements 6.40 X 4.36 X 2.82 MM

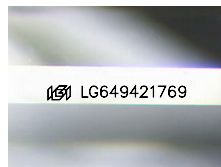
### GRADING RESULTS

Carat Weight 0.77 CARAT  
Color Grade D  
Clarity Grade VS 2

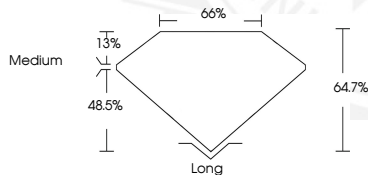
### ADDITIONAL GRADING INFORMATION

Polish EXCELLENT  
Symmetry EXCELLENT  
Fluorescence NONE  
Inscription(s) LG649421769

Comments: This Laboratory Grown Diamond was created by Chemical Vapor Deposition (CVD) growth process.  
Type IIa



Sample Image Used



August 30, 2024  
IGI Report Number LG649421769  
EMERALD CUT  
LABORATORY GROWN DIAMOND  
6.40 X 4.36 X 2.82 MM  
Carat Weight 0.77 CARAT  
Color Grade D  
Clarity Grade VS 2  
Polish EXCELLENT  
Symmetry EXCELLENT  
Fluorescence NONE  
Inscription(s) LG649421769  
Comments: This Laboratory Grown Diamond was created by Chemical Vapor Deposition (CVD) growth process. Type IIa



THIS DOCUMENT WAS PRODUCED WITH THE FOLLOWING SECURITY MEASURES: SPECIAL DOCUMENT PAPER, INK SCREENS, WATERMARK, BACKGROUND DESIGNS, HOLOGRAM AND OTHER SECURITY FEATURES NOT LISTED AND DO EXCEED DOCUMENT SECURITY INDUSTRY GUIDELINES.

For terms & conditions and to verify this report, please visit [www.igi.org](http://www.igi.org)