



# INTERNATIONAL GEMOLOGICAL INSTITUTE

ELECTRONIC COPY

LG648439294



August 18, 2024

IGI Report Number LG648439294

ROUND BRILLIANT

LABORATORY GROWN DIAMOND

4.93 - 4.95 X 3.02 MM

Carat Weight 0.45 CARAT

Color Grade D

Clarity Grade VS 1

Cut Grade IDEAL

Polish EXCELLENT

Symmetry EXCELLENT

Fluorescence NONE

Inscription(s) IGI LG648439294

Comments: This Laboratory Grown Diamond was created by Chemical Vapor Deposition (CVD) growth process. Type IIa

## LABORATORY GROWN DIAMOND REPORT

August 18, 2024

IGI Report Number

LG648439294

Description

LABORATORY GROWN DIAMOND

Shape and Cutting Style

ROUND BRILLIANT

Measurements

4.93 - 4.95 X 3.02 MM

### GRADING RESULTS

Carat Weight 0.45 CARAT

Color Grade D

Clarity Grade VS 1

Cut Grade IDEAL

### ADDITIONAL GRADING INFORMATION

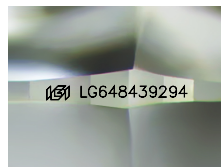
Polish EXCELLENT

Symmetry EXCELLENT

Fluorescence NONE

Inscription(s) IGI LG648439294

Comments: This Laboratory Grown Diamond was created by Chemical Vapor Deposition (CVD) growth process. Type IIa



Sample Image Used



August 18, 2024

IGI Report Number LG648439294

ROUND BRILLIANT

LABORATORY GROWN DIAMOND

4.93 - 4.95 X 3.02 MM

Carat Weight 0.45 CARAT

Color Grade D

Clarity Grade VS 1

Cut Grade IDEAL

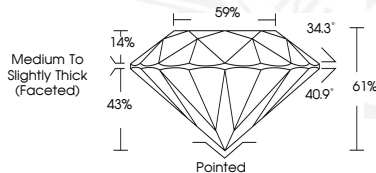
Polish EXCELLENT

Symmetry EXCELLENT

Fluorescence NONE

Inscription(s) IGI LG648439294

Comments: This Laboratory Grown Diamond was created by Chemical Vapor Deposition (CVD) growth process. Type IIa



THIS DOCUMENT WAS PRODUCED WITH THE FOLLOWING SECURITY MEASURES: SPECIAL DOCUMENT PAPER, INK SCREENS, WATERMARK, BACKGROUND DESIGNS, HOLOGRAM AND OTHER SECURITY FEATURES NOT LISTED AND DO EXCEED DOCUMENT SECURITY INDUSTRY GUIDELINES.

For terms & conditions and to verify this report, please visit [www.igi.org](http://www.igi.org)