

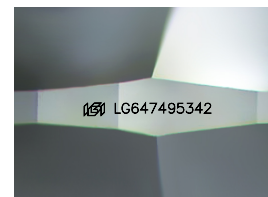
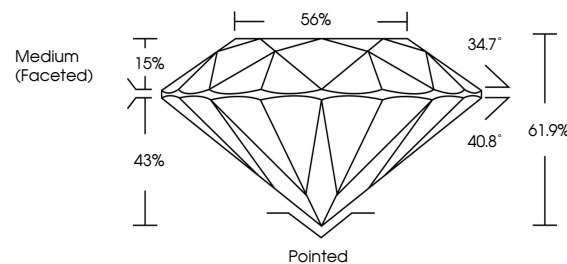


**ELECTRONIC COPY**

## LABORATORY GROWN DIAMOND REPORT

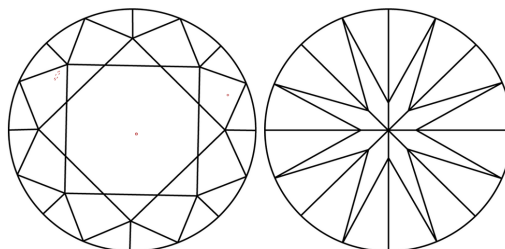
LG647495342  
Report verification at [igi.org](https://igi.org)

## PROPORTIONS



Sample Image Used

## CLARITY CHARACTERISTICS



### KEY TO SYMBOLS

Red symbols indicate internal characteristics.  
Green symbols indicate external characteristics.

## COLOR

D E F G H I J Faint Very Light Light

## CLARITY

IF	VVS <sup>1,2</sup>	VS <sup>1,2</sup>	SI <sup>1,2</sup>	I <sup>1,3</sup>
Internally Flawless	Very Very Slightly Included	Very Slightly Included	Slightly Included	Included



© IGI 2020, International Gemological Institute

FD - 10 20

**www.igi.org**

## LABORATORY GROWN DIAMOND REPORT



August 10, 2024

IGI Report Number **LG647495342**Description **LABORATORY GROWN DIAMOND**Shape and Cutting Style **ROUND BRILLIANT**

Measurements	9.62 - 9.66 X 5.96 MM
--------------	-----------------------

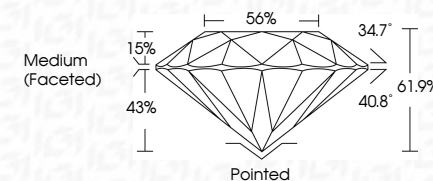
## GRADING RESULTS

Carat Weight **3.42 CARATS**

Color Grade E

Clarity Grade **SI 2**

Cut Grade **IDEAL**



### ADDITIONAL GRADING INFORMATION

Polish **EXCELLENT**Symmetry **EXCELLENT**Fluorescence **NONE**Inscription(s)  LG647495342

Comments: This Laboratory Grown Diamond was created by Chemical Vapor Deposition (CVD) growth process.  
Type IIa



August 10, 2024  
GI Report No LG647495342  
ROUND BRILLIANT

9.68 - 9.65 X 5.95 MM	3.42 CARATS	
Carat Weight		
Color Grade	S12	Pointed
Clarity Grade	IDEAL	EXCELLENT
Cut Grade	61.9%	EXCELLENT
Depth	56%	NONE
Table		
Grade	Medium (Faceted)	
Culet		
Polish		
Symmetry		
Fluorescence		

**Comments:**  
This Laboratory Grown Diamond was  
created by Chemical Vapor Deposition  
(CVD) growth process.