

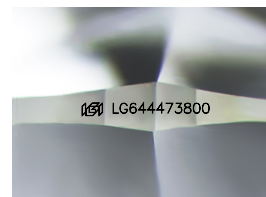
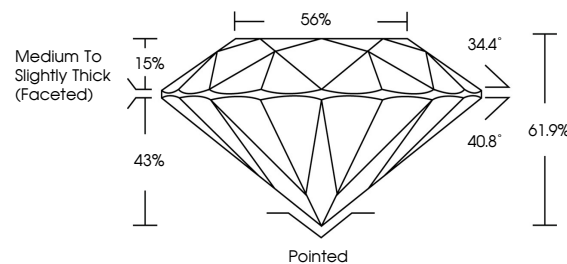


ELECTRONIC COPY

LABORATORY GROWN DIAMOND REPORT

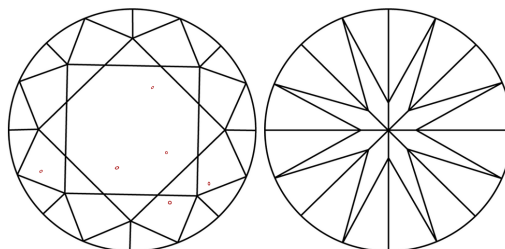
LG644473800
Report verification at lgi.org

PROPORTIONS



Sample Image Used

CLARITY CHARACTERISTICS



KEY TO SYMBOLS

Red symbols indicate internal characteristics.
Green symbols indicate external characteristics.

COLOR

D E F G H I J Faint Very Light Light

CLARITY

IF	VVS ¹⁻²	VS ¹⁻²	SI ¹⁻²	I ¹⁻³
Internally Flawless	Very Very Slightly Included	Very Slightly Included	Slightly Included	Included



© IGI 2020, International Gemological Institute

FD - 10 20

www.igi.org

LABORATORY GROWN DIAMOND REPORT



July 24, 2024

IGI Report Number **LG644473800**Description **LABORATORY GROWN DIAMOND**Shape and Cutting Style **ROUND BRILLIANT**

Measurements 8.45 - 8.48 X 5.24 MM

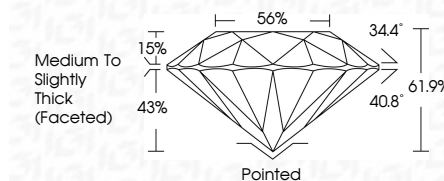
GRADING RESULTS

Carat Weight **2.32 CARATS**

Color Grade **E**

Clarity Grade SI 1

Cut Grade **IDEAL**



ADDITIONAL GRADING INFORMATION

Polish EXCELLENT

Symmetry **EXCELLENT**Fluorescence NONEInscription(s)  LG644473800

Comments: This Laboratory Grown Diamond was created by Chemical Vapor Deposition (CVD) growth process.
Type IIa



July 24, 2024	IG Report No.IG44473800	2.32 CARATS	S I	Medium to Slightly Tuck (Focaled)	Pointed	NONE	1691564473800	Comments: The Laboratory Crown Diamond was analyzed using Laser Vapor Deposition (LVD) growth process. Type IIa
ROUND BRILLIANT		61.7%	IDEAL		EXCELLENT			
		56%						
	Color Weight	Color Grade	Clarity Grade	Depth	Culet	Polish	Symmetry	Fluorescence
				Table				Inscriptions(s)
				Girdle				