



ELECTRONIC COPY

LABORATORY GROWN DIAMOND REPORT

July 22, 2024	
IGI Report Number	LG644416543
Description	LABORATORY GROWN DIAMOND
Shape and Cutting Style	CUT CORNERED RECTANGULAR MODIFIED BRILLIANT
Measurements	11.98 X 8.38 X 5.67 MM

GRADING RESULTS

Carat Weight	5.10 CARATS
Color Grade	H
Clarity Grade	VS 2

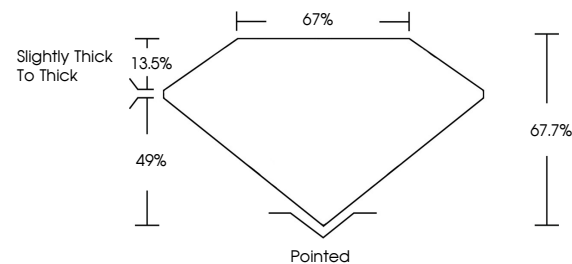
ADDITIONAL GRADING INFORMATION

Polish	EXCELLENT
Symmetry	EXCELLENT
Fluorescence	NONE
Inscription(s)	15 LG644416543

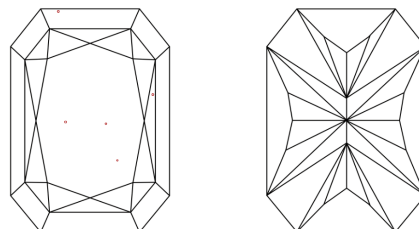
Comments: This Laboratory Grown Diamond was created by Chemical Vapor Deposition (CVD) growth process.
Type IIa

LG644416543
Report verification at lgi.org

PROPORTIONS

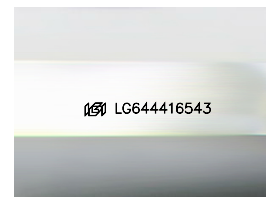


CLARITY CHARACTERISTICS



KEY TO SYMBOLS

Red symbols indicate internal characteristics.
Green symbols indicate external characteristics.



Sample Image Used

COLOR

D E F G H I J Faint Very Light Light

CLARITY

IF	VVS ¹⁻²	VS ¹⁻²	SI ¹⁻²	I ¹⁻³
Internally Flawless	Very Very Slightly Included	Very Slightly Included	Slightly Included	Included



© IGI 2020, International Gemological Institute

FD - 10 20

www.igi.org

LABORATORY GROWN DIAMOND REPORT



July 22, 2024

IGI Report Number LG644416543

Description **LABORATORY GROWN DIAMOND**

Shape and Cutting Style

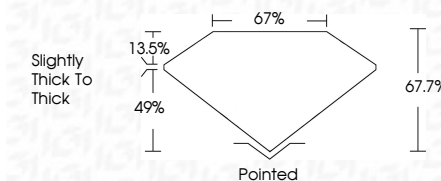
Measurements 11.98 X 8.38 X 5.67 MM

GRADING RESULTS

Carat Weight 5.10 CARATS

Color Grade H

Clarity Grade VS 2



ADDITIONAL GRADING INFORMATION

Polish **EXCELLENT**

Symmetry **EXCELLENT**

Fluorescence **NONE**Inscription(s) 1131 LG644416543

Comments: This Laboratory Grown Diamond was created by Chemical Vapor Deposition (CVD) growth process.
Type IIa



July 22, 2024	
GJ CORNBED RECT. MODIFIED BRILLIANT	
1.18 X 8.38 X 5.67 MM	
Carat Weight	5.10 CARATS
Color Grade	H
Clarity Grade	VS 2
Depth	61.7%
Table	57%
Girdle	Slightly Thick to Thick
Culet	Pointed
Polish	EXCELLENT
Symmetry	EXCELLENT
Fluorescence	NONE
Inscriptions(s)	©GJ LG544416543
Comments:	
	The Laboratory Grown Diamond was found to be a Type IIa with no CVD growth process.
	Type IIa