



ELECTRONIC COPY

LABORATORY GROWN DIAMOND REPORT

July 15, 2024	
IGI Report Number	LG643453455
Description	LABORATORY GROWN DIAMOND
Shape and Cutting Style	CUT CORNERED RECTANGULAR MODIFIED BRILLIANT
Measurements	14.41 X 9.82 X 6.44 MM

GRADING RESULTS

Carat Weight	8.09 CARATS
Color Grade	F
Clarity Grade	SI 1

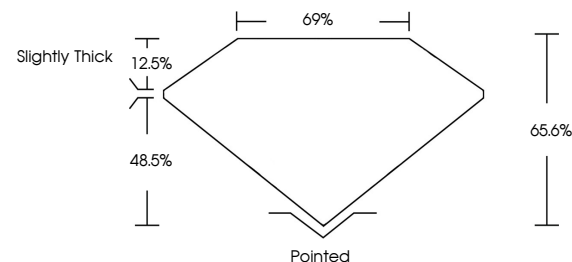
ADDITIONAL GRADING INFORMATION

Polish	EXCELLENT
Symmetry	EXCELLENT
Fluorescence	NONE
Inscription(s)	 LG643453455

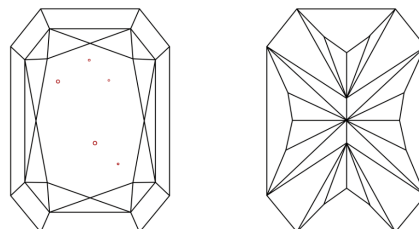
Comments: This Laboratory Grown Diamond was created by Chemical Vapor Deposition (CVD) growth process.
Type IIa

LG643453455
Report verification at lgi.org

PROPORTIONS

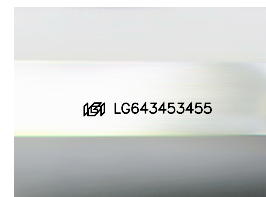


CLARITY CHARACTERISTICS



KEY TO SYMBOLS

Red symbols indicate internal characteristics.
Green symbols indicate external characteristics.



Sample Image Used

COLOR

D E F G H I J Faint Very Light Light

CLARITY

IF	VVS ¹⁻²	VS ¹⁻²	SI ¹⁻²	I ¹⁻³
Internally Flawless	Very Very Slightly Included	Very Slightly Included	Slightly Included	Included



© IGI 2020, International Gemological Institute

FD - 10 20

www.igi.org

LABORATORY GROWN DIAMOND REPORT

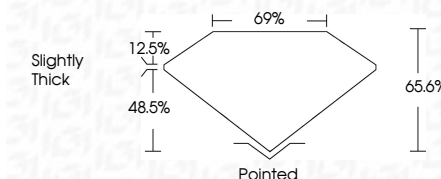


July 15, 2024	
IGI Report Number	LG643453455
Description	LABORATORY GROWN DIAMOND
Shape and Cutting Style	CUT CORNERED RECTANGULAR MODIFIED BRILLIANT

Measurements **14.41 X 9.82 X 6.44 MM**

GRADING RESULTS

Carat Weight	8.09 CARATS
Color Grade	F
Clarity Grade	S1



ADDITIONAL GRADING INFORMATION

Polish	EXCELLENT
Symmetry	EXCELLENT
Fluorescence	NONE
Inscription(s)	 LG643453455

Comments: This Laboratory Grown Diamond was created by Chemical Vapor Deposition (CVD) growth process.
Type IIa



July 15, 2024	GL Report No. LG543453455	GL CORNERED RECT. MODIFIED BRILLIANT
1441 X 9.82 X 0.44 MM	Carat Weight	8.09 CARATS
	Color Grade	F
	Clarity Grade	S I 1
	Depth	66.6%
	Table	67%
	Girdle	Slightly Thick
	Culet	Pointed
	Polish	EXCELLENT
	Symmetry	EXCELLENT
	Fluorescence	NONE
	Inscriptions(s)	1891 LG543453455

Comments: Emerald Green Diamond was created by Chemical Vapor Deposition (CVD) growth process.

Type IIa