



ELECTRONIC COPY

LABORATORY GROWN DIAMOND REPORT

May 31, 2024	
IGI Report Number	LG636428615
Description	LABORATORY GROWN DIAMOND
Shape and Cutting Style	CUT CORNERED RECTANGULAR MODIFIED BRILLIANT
Measurements	11.18 X 7.85 X 5.19 MM

GRADING RESULTS

Carat Weight	4.06 CARATS
Color Grade	F
Clarity Grade	VS 2

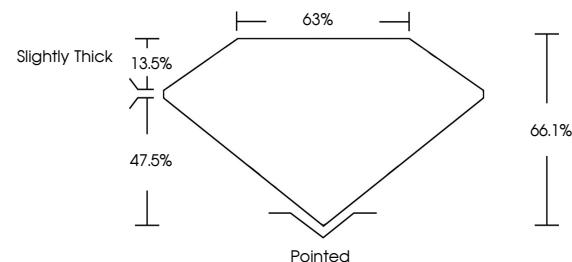
ADDITIONAL GRADING INFORMATION

Polish	EXCELLENT
Symmetry	EXCELLENT
Fluorescence	NONE
Inscription(s)	15 LG636428615

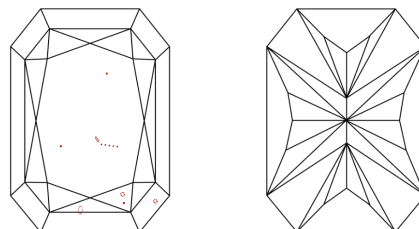
Comments: This Laboratory Grown Diamond was created by Chemical Vapor Deposition (CVD) growth process.
Type IIa

LG636428615
Report verification at igi.org

PROPORTIONS

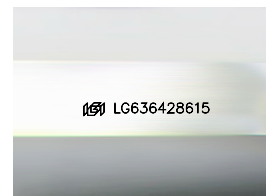


CLARITY CHARACTERISTICS



KEY TO SYMBOLS

Red symbols indicate internal characteristics.
Green symbols indicate external characteristics.



Sample Image Used

COLOR

D E F G H I J Faint Very Light Light

CLARITY

IF	VVS ¹⁻²	VS ¹⁻²	SI ¹⁻²	I ¹⁻³
Internally Flawless	Very Very Slightly Included	Very Slightly Included	Slightly Included	Included



© IGI 2020, International Gemological Institute

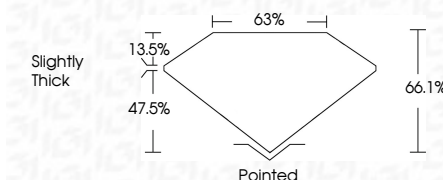
FD - 10 20

www.igi.org

DIAMOND REPORT



May 31, 2024	
IGI Report Number	LG636428615
Description	LABORATORY GROWN DIAMOND
Shape and Cutting Style	CUT CORNERED RECTANGULAR MODIFIED BRILLIANT
Measurements	11.18 X 7.85 X 5.19 MM
GRADING RESULTS	
Carat Weight	4.06 CARATS
Color Grade	F
Clarity Grade	VS 2



ADDITIONAL GRADING INFORMATION

Polish	EXCELLENT
Symmetry	EXCELLENT
Fluorescence	NONE
Inscription(s)	 LG636428615
Comments: This Laboratory Grown Diamond was created by Chemical Vapor Deposition (CVD) growth process.	
Type IIa	



May 31, 2024	GI Report No. G5342615	1.00 CARATS	VS 2	Polished	Comments: This is a Crown Diamond was created by Chemical Vapor Deposition (CVD) growth process. Type IIG
CUF CORNBED RECT. MODIFIED BRILLIANT	1.18 X 7.85 X 5.19 MM	6A 1%	Slightly Thick	EXCELLENT	
		65%		EXCELLENT	
				NONE	
				681 L5342615/15	