



ELECTRONIC COPY

LABORATORY GROWN DIAMOND REPORT

May 21, 2024	
IGI Report Number	LG635404857
Description	LABORATORY GROWN DIAMOND
Shape and Cutting Style	CUT CORNERED RECTANGULAR MODIFIED BRILLIANT
Measurements	12.36 X 8.40 X 5.52 MM

GRADING RESULTS

Carat Weight	5.05 CARATS
Color Grade	E
Clarity Grade	VS 2

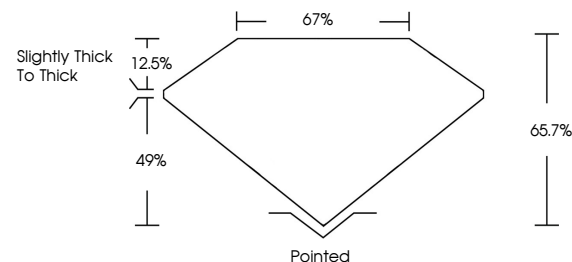
ADDITIONAL GRADING INFORMATION

Polish	EXCELLENT
Symmetry	EXCELLENT
Fluorescence	NONE
Inscription(s)	 LG635404857

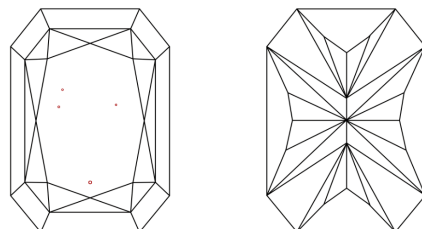
Comments: This Laboratory Grown Diamond was created by Chemical Vapor Deposition (CVD) growth process and may include post-growth treatment.
Type IIa

LG635404857
Report verification at lgi.org

PROPORTIONS

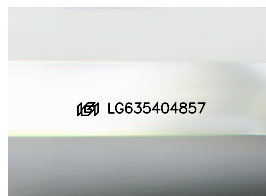


CLARITY CHARACTERISTICS



KEY TO SYMBOLS

Red symbols indicate internal characteristics.
Green symbols indicate external characteristics.



Sample Image Used

COLOR

D E F G H I J Faint Very Light Light

CLARITY

IF	VVS ^{1,2}	VS ^{1,2}	SI ^{1,2}	I ^{1,3}
Internally Flawless	Very Very Slightly Included	Very Slightly Included	Slightly Included	Included



© IGI 2020, International Gemological Institute

FD - 10 20

www.igi.org

DIAMOND REPORT

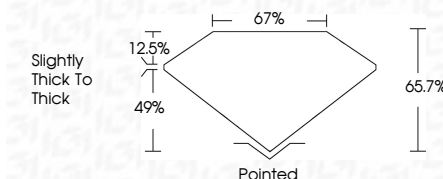


May 21, 2024	
IGI Report Number	LG635404857
Description	LABORATORY GROWN DIAMOND
Shape and Cutting Style	CUT CORNERED RECTANGULAR MODIFIED BRILLIANT

Measurements 12.36 X 8.40 X 5.52 MM

GRADING RESULTS

Carat Weight	5.05 CARATS
Color Grade	E
Clarity Grade	VS 2



ADDITIONAL GRADING INFORMATION

Polish	EXCELLENT
Symmetry	EXCELLENT
Fluorescence	NONE
Inscription(s)	15 LG-635404857

Comments: This Laboratory Grown Diamond was created by Chemical Vapor Deposition (CVD) growth process and may include post-growth treatment.
Type IIa



May 21, 2024	
GJ REPORT NO LG638-04987	
CUT CORNBED RECT. MODIFIED BRILLIANT	
12.34 X 8.40 X 5.52 MM	
Carat Weight	5.05 CARATS
Color Grade	E
Clarity Grade	VS 2
Depth	61.7%
Table	67%
Girdle	Slightly Thick to Thin
Culet	Poished
Polish	EXCELLENT
Symmetry	EXCELLENT
Fluorescence	NONE
Inscriptions(s)	(g) LG638-04987

Comments:

The Laboratory Crown Diamond was issued as a loose stone. The diamond has been through post-growth process and may include post-growth treatment.

Type IIA