

LABORATORY GROWN DIAMOND REPORT

May 21, 2024	
IGI Report Number	LG635404801
Description	LABORATORY GROWN DIAMOND
Shape and Cutting Style	ROUND BRILLIANT
Measurements	8.90 - 8.96 X 5.42 MM

GRADING RESULTS

Carat Weight	2.61 CARATS
Color Grade	E
Clarity Grade	SI 1
Cut Grade	IDEAL

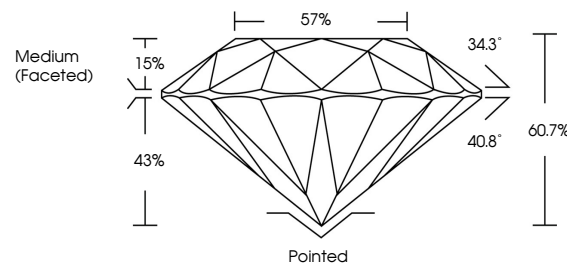
ADDITIONAL GRADING INFORMATION

Polish	EXCELLENT
Symmetry	EXCELLENT
Fluorescence	NONE
Inscription(s)	15 LG635404801

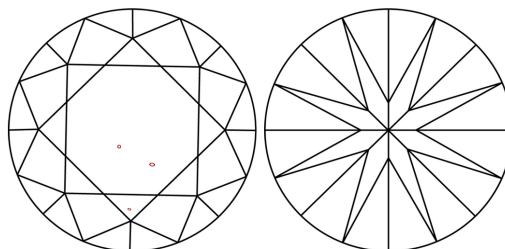
Comments: This Laboratory Grown Diamond was created by Chemical Vapor Deposition (CVD) growth process and may include post-growth treatment.
Type IIa

LG635404801
Report verification at lgi.org

PROPORTIONS

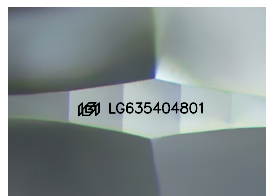


CLARITY CHARACTERISTICS



KEY TO SYMBOLS

Red symbols indicate internal characteristics.
Green symbols indicate external characteristics.



Sample Image Used

COLOR

D E F G H I J Faint Very Light Light

CLARITY

IF	VVS ¹⁻²	VS ¹⁻²	SI ¹⁻²	I ¹⁻³
Internally Flawless	Very Very Slightly Included	Very Slightly Included	Slightly Included	Included



© IGI 2020, International Gemological Institute

FD - 10 20

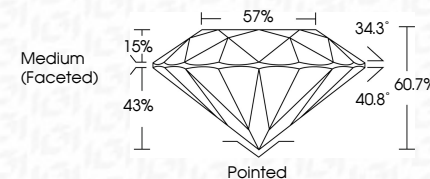
www.igi.org



May 21, 2024	
IGI Report Number	LG635404801
Description	LABORATORY GROWN DIAMOND
Shape and Cutting Style	ROUND BRILLIANT
Measurements	8.90 - 8.96 X 5.42 MM

GRADING RESULTS

Carat Weight	2.61 CARATS
Color Grade	E
Clarity Grade	SI 1
Cut Grade	IDEAL



ADDITIONAL GRADING INFORMATION

Polish	EXCELLENT
Symmetry	EXCELLENT
Fluorescence	NONE
Inscription(s)	(15) LG-635404801

Comments: This Laboratory Grown Diamond was created by Chemical Vapor Deposition (CVD) growth process and may include post-growth treatment.
Type IIa



IG

May 21, 2024	IGI Report No. LG835404801	
ROUND BRILLIANT	2.61 CARATS	
9.90 - 9.95 X 6.42 MM	E	
Color: Weight	\$1	IDEAL
Carat: Grade	60.7%	67%
Clarity: Grade	Medium (Faceted)	
Cut: Grade	Polished	EXCELLENT
Depth	Symmetry	EXCELLENT
Table	Fluorescence	NONE
Grade	Inclusions (s)	891 LG835404801
Quiet	Comments:	
Polish	This Laboratory Grown Diamond was created by Chemical Vapor Deposition (CVD) growth process and may include inclusions with treatment.	
Symmetry	Type Ila	