



ELECTRONIC COPY

LABORATORY GROWN DIAMOND REPORT

May 11, 2024	
IGI Report Number	LG634403886
Description	LABORATORY GROWN DIAMOND
Shape and Cutting Style	CUT CORNERED RECTANGULAR MODIFIED BRILLIANT
Measurements	11.14 X 7.89 X 5.25 MM

GRADING RESULTS

Carat Weight	4.06 CARATS
Color Grade	I
Clarity Grade	VS 1

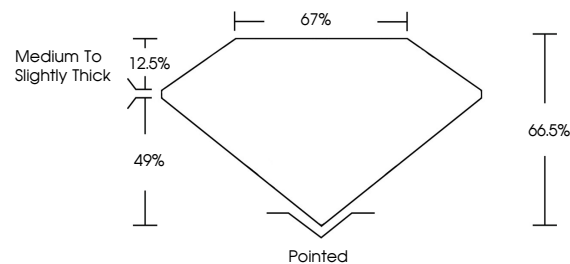
ADDITIONAL GRADING INFORMATION

Polish	EXCELLENT
Symmetry	EXCELLENT
Fluorescence	NONE
Inscription(s)	LG634403886

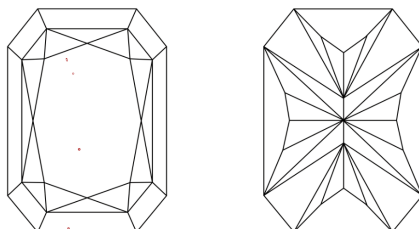
Comments: This Laboratory Grown Diamond was created by Chemical Vapor Deposition (CVD) growth process and may include post-growth treatment.
Type IIa

LG634403886
Report verification at lgi.org

PROPORTIONS

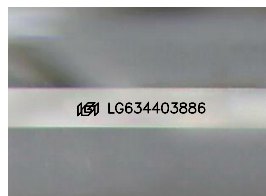


CLARITY CHARACTERISTICS



KEY TO SYMBOLS

Red symbols indicate internal characteristics.
Green symbols indicate external characteristics.



Sample Image Used

COLOR

D E F G H I J Faint Very Light Light

CLARITY

IF	VVS ¹⁻²	VS ¹⁻²	SI ¹⁻²	I ¹⁻³
Internally Flawless	Very Very Slightly Included	Very Slightly Included	Slightly Included	Included



© IGI 2020, International Gemological Institute

FD - 10 20

www.igi.org

DIAMOND REPORT



May 11, 2024

IGI Report Number LG634403886

Description **LABORATORY GROWN DIAMOND**

Shape and Cutting Style

CUT CORNERED
RECTANGULAR MODIFIED
BRILLIANT

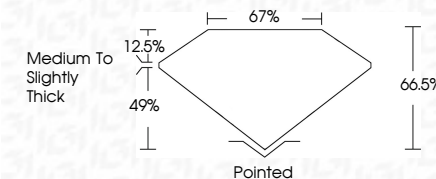
Measurements 11.14 X 7.89 X 5.25 MM

GRADING RESULTS

Carat Weight 4.06 CARATS

Color Grade

Clarity Grade VS 1



ADDITIONAL GRADING INFORMATION

Polish **EXCELLENT**Symmetry **EXCELLENT**Fluorescence **NONE**Inscription(s)  LG634403886

Comments: This Laboratory Grown Diamond was created by Chemical Vapor Deposition (CVD) growth process and may include post-growth treatment.
Type IIa



IG

May 11, 2024	GI REPORT NO LG53403886	CUT CORNBED RECT. MODIFIED BRILLANT	4.05 CARATS	Vs 1	66.5%	0.7%	Medium To Slightly Thick	Pointed	EXCELLENT	EXCELLENT	NONE	lg51 LG53403886
			1.4 X 7.89 X 5.25 MM	Color Weight	Depth	Gtable		Quiet	Polish	Symmetry	Fluorescence	
				Color Grade	Clarity Grade	Grading					Inscription(s)	

Comments:

The Laboratory Crown Diamond was not subjected to any of the standard post-growth processes and may include type IIa