



**ELECTRONIC COPY**

## LABORATORY GROWN DIAMOND REPORT

April 25, 2024	
IGI Report Number	LG632473426
Description	LABORATORY GROWN DIAMOND
Shape and Cutting Style	ROUND BRILLIANT
Measurements	9.25 - 9.28 X 5.59 MM

## GRADING RESULTS

Carat Weight	2.92 CARATS
Color Grade	F
Clarity Grade	VS 1
Cut Grade	IDEAL

### ADDITIONAL GRADING INFORMATION

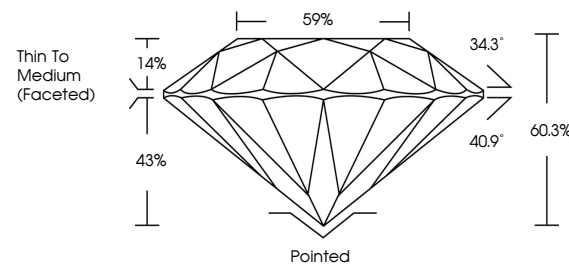
Polish	EXCELLENT
Symmetry	EXCELLENT
Fluorescence	NONE
Inscription(s)	15 LG632473426

Comments: This Laboratory Grown Diamond was created by Chemical Vapor Deposition (CVD) growth process and may include post-growth treatment.  
Type IIa

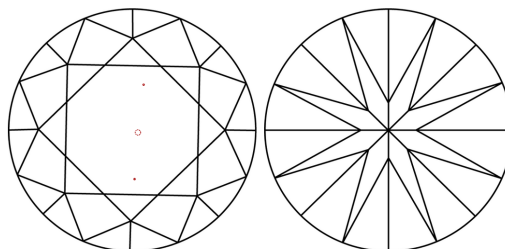
## LABORATORY GROWN DIAMOND REPORT

LG632473426  
Report verification at [igi.org](https://igi.org)

## PROPORTIONS



## CLARITY CHARACTERISTICS



### KEY TO SYMBOLS

Red symbols indicate internal characteristics.  
Green symbols indicate external characteristics.

LABORATORY GROWN  
DIAMOND REPORT

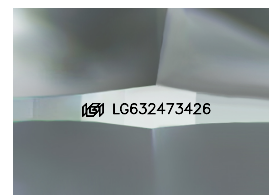
## GRADING SCALES

## CLARITY

IF	VVS <sup>1-2</sup>	VS <sup>1-2</sup>	SI <sup>1-2</sup>	I <sup>1-3</sup>
Internally Flawless	Very Very Slightly Included	Very Slightly Included	Slightly Included	Included

**COLOR**

D E F G H I J Faint Very Light Light



Sample Image Used



© IGI 2020, International Gemological Institute

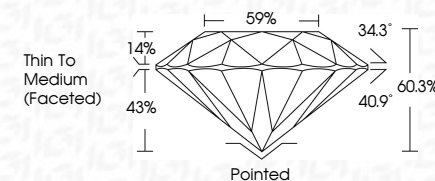
FD - 10 20

**www.igi.org**

## LABORATORY GROWN DIAMOND REPORT

April 25, 2024	
IGI Report Number	LG632473426
Description	LABORATORY GROWN DIAMOND
Shape and Cutting Style	ROUND BRILLIANT
Measurements	9.25 - 9.28 X 5.59 MM

Carat Weight	2.92 CARATS
Color Grade	F
Clarity Grade	VS 1
Cut Grade	IDEAL



### ADDITIONAL GRADING INFORMATION

Polish	EXCELLENT
Symmetry	EXCELLENT
Fluorescence	NONE
Inscription(s)	 LG632473426

Comments: This Laboratory Grown Diamond was created by Chemical Vapor Deposition (CVD) growth process and may include post-growth treatment.  
Type IIa



<b>April 25, 2024</b>	<b>202 CARATS</b>	<b>Vs I</b>	<b>Pointed</b>
<b>G Report No. LG53973426</b>	<b>F</b>	<b>IDEAL</b>	<b>EXCELLENT</b>
<b>SOUND BRILLIANT</b>		<b>60.5%</b>	<b>BETTER</b>
		<b>59%</b>	<b>NONE</b>
		<b>Thin To Medium</b>	<b>(#) LG53973426</b>
		<b>(faceted)</b>	
<b>25.25 - 9.28 x 5.67 MM</b>	<b>Color Weight</b>	<b>Clearly Grade</b>	<b>Culet</b>
	<b>Color Grade</b>	<b>Cut Grade</b>	<b>Polish</b>
		<b>Depth</b>	<b>Symmetry</b>
		<b>Table</b>	<b>Turbulence</b>
		<b>Grain</b>	<b>Inscriptions(s)</b>

**Comments:** Chemically Grown Diamond was created by Chemical Vapor Deposition (CVD) growth process and may include post-growth treatment.

**Type IIa**