



**ELECTRONIC COPY**

## LABORATORY GROWN DIAMOND REPORT

February 7, 2024	
IGI Report Number	LG620454581
Description	LABORATORY GROWN DIAMOND
Shape and Cutting Style	ROUND BRILLIANT
Measurements	9.00 - 9.03 X 5.53 MM

## GRADING RESULTS

Carat Weight	2.73 CARATS
Color Grade	F
Clarity Grade	VS 2
Cut Grade	IDEAL

### ADDITIONAL GRADING INFORMATION

Polish	EXCELLENT
Symmetry	EXCELLENT
Fluorescence	NONE
Inscription(s)	 LG620454581

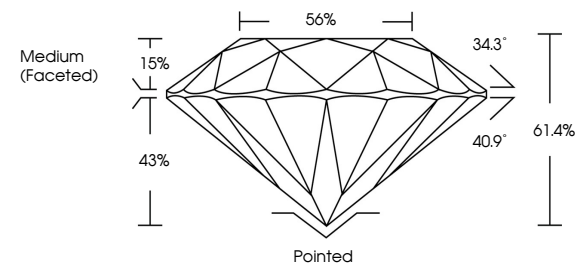
Comments: This Laboratory Grown Diamond was created by Chemical Vapor Deposition (CVD) growth process and may include post-growth treatment.  
Type IIa

## LABORATORY GROWN DIAMOND REPORT

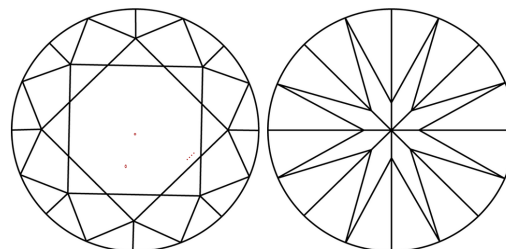
LG620454581

Report verification at [igi.org](http://igi.org)

## PROPORTIONS



## CLARITY CHARACTERISTICS



## KEY TO SYMBOLS

Red symbols indicate internal characteristics.  
Green symbols indicate external characteristics.

LABORATORY GROWN  
DIAMOND REPORT

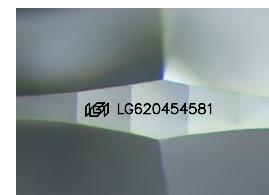
## GRADING SCALES

## CLARITY

IF	VVS <sup>1-2</sup>	VS <sup>1-2</sup>	SI <sup>1-2</sup>	I <sup>1-3</sup>
Internally Flawless	Very Very Slightly Included	Very Slightly Included	Slightly Included	Included

**COLOR**

D E F G H I J Faint Very Light Light



Sample Image Used



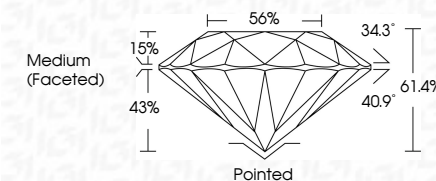
© IGI 2020, International Gemological Institute

FD - 10 20

## LABORATORY GROWN DIAMOND REPORT

February 7, 2024	
IGI Report Number	LG620454581
Description	LABORATORY GROWN DIAMOND
Shape and Cutting Style	ROUND BRILLIANT
Measurements	9.00 - 9.03 X 5.53 MM

Carat Weight	2.73 CARATS
Color Grade	F
Clarity Grade	VS 2
Cut Grade	IDEAL



### ADDITIONAL GRADING INFORMATION

Polish	EXCELLENT
Symmetry	EXCELLENT
Fluorescence	NONE
Inscription(s)	151 LG620454581

Comments: This Laboratory Grown Diamond was created by Chemical Vapor Deposition (CVD) growth process and may include post-growth treatment.  
Type IIa



February 7, 2024	2/7/2024
GI Report No. LG202404581	2/7/2024
ROUND BRILLANT	2/7/2024
0.00 - 0.03 X 5.63 MM	2/7/2024
Carat Weight	2/7/2024
Color Grade	2/7/2024
Clarity Grade	2/7/2024
Cut Grade	2/7/2024
Depth	2/7/2024
Table	2/7/2024
Girdle	2/7/2024
Medium (Faceted)	2/7/2024
VS 2	2/7/2024
IDEAL	2/7/2024
61.4%	2/7/2024
56%	2/7/2024
Ported	2/7/2024
EXCELLENT	2/7/2024
EXCELLENT	2/7/2024
NONE	2/7/2024
161 LG202404581	2/7/2024
Comments:	2/7/2024
Created by: Cheryl Diamond was	2/7/2024
treated by: Chemical Vapor Deposition	2/7/2024
(CVD) growth process and may include	2/7/2024
post-growth treatment.	2/7/2024
Type IIA	2/7/2024