



LABORATORY GROWN DIAMOND REPORT

February 7, 2024	
IGI Report Number	LG620437289
Description	LABORATORY GROWN DIAMOND
Shape and Cutting Style	CUT CORNERED RECTANGULAR MODIFIED BRILLIANT
Measurements	8.76 X 6.21 X 4.18 MM

ADDITIONAL GRADING INFORMATION

Polish	EXCELLENT
Symmetry	EXCELLENT
Fluorescence	NONE
Inscription(s)	 LG620437289

Comments: This Laboratory Grown Diamond was created by Chemical Vapor Deposition (CVD) growth process and may include post-growth treatment.
Type IIa

LABORATORY GROWN DIAMOND REPORT

LG620437289

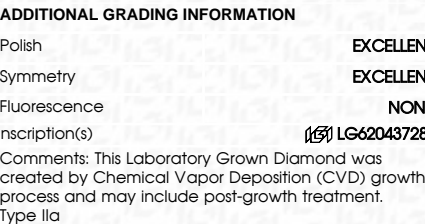
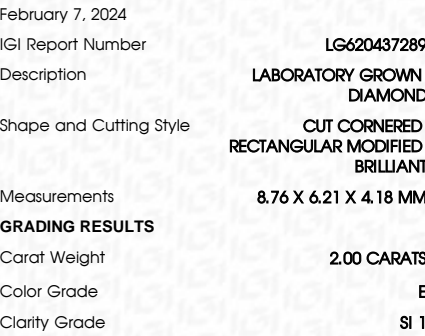
Report verification at [igi.org](https://www.igi.org)

PROPORTIONS

CLARITY CHARACTERISTICS

KEY TO SYMBOLS

CLARITY



FD - 10 20



www.igi.org

February 7, 2024

IGI Report No LG62U43/289

CUT CORNERED RECT. MODIFIED BRILLIANT

Carat Weight 0.00 CARATS

Carat Weight

Clarity Grade	SI 1
SI 1	

6789

Circle

slightly thick to thick

Pointed
Culter

Polish

Fluorescence
NONE

Inscription(s) 1881 | G-620437280

Comments:

epilipal now paid second quarter (LAC)

post-growth treatment.