



ELECTRONIC COPY

LABORATORY GROWN DIAMOND REPORT

June 8, 2023	
IGI Report Number	LG585396661
Description	LABORATORY GROWN DIAMOND
Shape and Cutting Style	ROUND BRILLIANT
Measurements	15.27 - 15.33 X 9.22 MM

GRADING RESULTS

Carat Weight	13.13 CARATS
Color Grade	E
Clarity Grade	SI 1
Cut Grade	IDEAL

ADDITIONAL GRADING INFORMATION

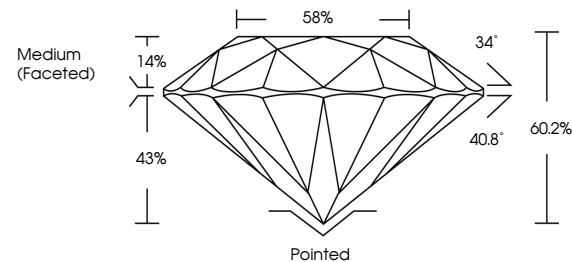
Polish	EXCELLENT
Symmetry	EXCELLENT
Fluorescence	NONE
Inscription(s)	LG585396661

Comments: This Laboratory Grown Diamond was created by Chemical Vapor Deposition (CVD) growth process and may include post-growth treatment.
Type IIa

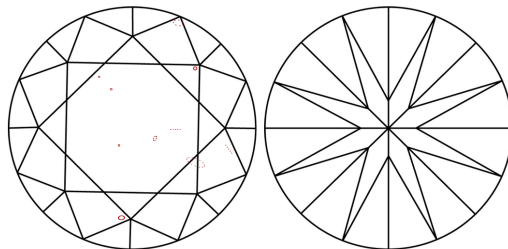
LABORATORY GROWN DIAMOND REPORT

LG585396661
Report verification at igi.org

PROPORTIONS



CLARITY CHARACTERISTICS



KEY TO SYMBOLS

Red symbols indicate internal characteristics.
Green symbols indicate external characteristics.

LABORATORY GROWN
DIAMOND REPORT

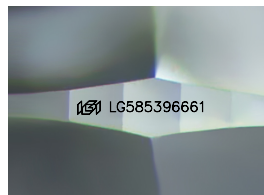
GRADING SCALES

CLARITY

IF	VVS ¹⁻²	VS ¹⁻²	SI ¹⁻²	I ¹⁻³
Internally Flawless	Very Very Slightly Included	Very Slightly Included	Slightly Included	Included

COLOR

D E F G H I J Faint Very Light Light



Sample Image Used



© IGI 2020, International Gemological Institute

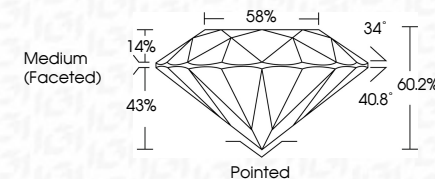
FD - 10 20

www.igi.org

LABORATORY GROWN DIAMOND REPORT

June 8, 2023	
IGI Report Number	LG585396661
Description	LABORATORY GROWN DIAMOND
Shape and Cutting Style	ROUND BRILLIANT
Measurements	15.27 - 15.33 X 9.22 MM

Carat Weight	13.13 CARATS
Color Grade	E
Clarity Grade	SI 1
Cut Grade	IDEAL



ADDITIONAL GRADING INFORMATION

Polish	EXCELLENT
Symmetry	EXCELLENT
Fluorescence	NONE
Inscription(s)	15 LG585396661

Comments: This Laboratory Grown Diamond was created by Chemical Vapor Deposition (CVD) growth process and may include post-growth treatment.
Type IIa



June 8, 2023	GI report No LG58896661	
ROUND BRILLIANT		
16.57 - 15.33 X 9.22 MM	13.13 CARATS	
Color: White	E	S I
Color Grade		IDEAL
Clarity Grade		60.2%
Cut Grade		58%
Depth		Medium (Faceted)
Table		
Girdle		
Quet	Partied	
Polish	EXCELLENT	
Symmetry	EXCELLENT	
Fluorescence	NONE	
Inscription(s)	169 LG58896661	
Comments:		
<p>Reported by Crown Diamond was created by Chemical Vapor Deposition (CVD) growth process and may include post-growth treatment.</p>		
Type IIA		