



**ELECTRONIC COPY**

## LABORATORY GROWN DIAMOND REPORT

June 15, 2023	
IGI Report Number	LG585313549
Description	LABORATORY GROWN DIAMOND
Shape and Cutting Style	ROUND BRILLIANT
Measurements	14.16 - 14.21 X 8.66 MM

## GRADING RESULTS

Carat Weight	10.69 CARATS
Color Grade	F
Clarity Grade	VS 2
Cut Grade	IDEAL

### ADDITIONAL GRADING INFORMATION

Polish	EXCELLENT
Symmetry	EXCELLENT
Fluorescence	NONE
Inscription(s)	 LG585313549

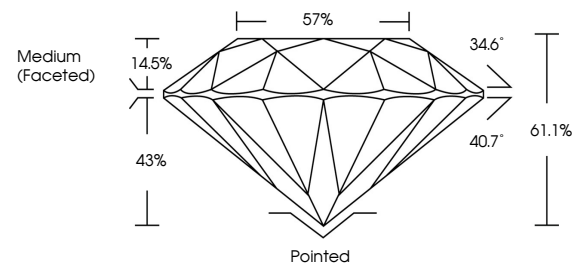
Comments: This Laboratory Grown Diamond was created by Chemical Vapor Deposition (CVD) growth process and may include post-growth treatment.  
Type IIa

## LABORATORY GROWN DIAMOND REPORT

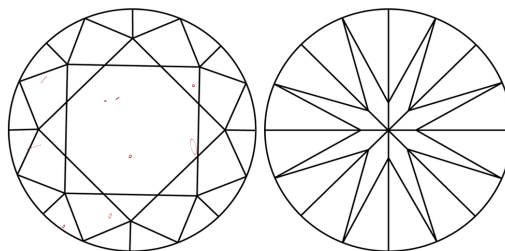
LG585313549

Report verification at [igi.org](http://igi.org)

## PROPORTIONS



## CLARITY CHARACTERISTICS



## KEY TO SYMBOLS

Red symbols indicate internal characteristics.  
Green symbols indicate external characteristics.

LABORATORY GROWN  
DIAMOND REPORT

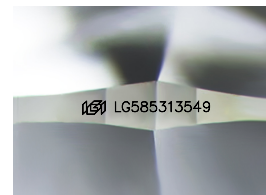
## GRADING SCALES

## CLARITY

IF	VVS <sup>1-2</sup>	VS <sup>1-2</sup>	SI <sup>1-2</sup>	I <sup>1-3</sup>
Internally Flawless	Very Very Slightly Included	Very Slightly Included	Slightly Included	Included

**COLOR**

D E F G H I J Faint Very Light Light



Sample Image Used



© IGI 2020, International Gemological Institute

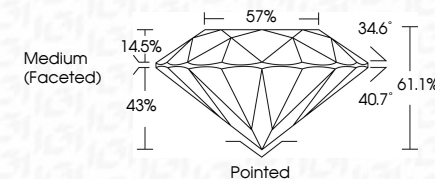
FD - 10 20

**www.igi.org**

## LABORATORY GROWN DIAMOND REPORT

June 15, 2023	
IGI Report Number	LG585313549
Description	LABORATORY GROWN DIAMOND
Shape and Cutting Style	ROUND BRILLIANT
Measurements	14.16 - 14.21 X 8.66 MM

Carat Weight	10.69 CARATS
Color Grade	F
Clarity Grade	VS 2
Cut Grade	IDEAL



### ADDITIONAL GRADING INFORMATION

Polish	EXCELLENT
Symmetry	EXCELLENT
Fluorescence	NONE
Inscription(s)	157 LG585313549

Comments: This Laboratory Grown Diamond was created by Chemical Vapor Deposition (CVD) growth process and may include post-growth treatment.  
Type IIa



June 15, 2028	GI Report No. LG588313549	10.69 CARATS	F	VS2	IDEAL	61.1%	57%	Medium (Faceted)	Pointed	Excellent	EXCELLENT	NONE	lg LG588313549	Comments: Grown Diamond was created by Grown Diamond using CVD growth process and may include post-growth treatment.
ROUND BRILLIANT	14.16 - 14.21 X 8.66 MM	Color Weight	Color Grade	Clarity Grade	Cut Grade	Depth	Table	Girdle	Quiet	Polish	Symmetry	Fluorescence	Inscription(s)	Type IIA