



**ELECTRONIC COPY**

## LABORATORY GROWN DIAMOND REPORT

May 18, 2023	
IGI Report Number	LG582365608
Description	LABORATORY GROWN DIAMOND
Shape and Cutting Style	ROUND BRILLIANT
Measurements	14.55 - 14.61 X 8.84 MM

## GRADING RESULTS

Carat Weight	11.40 CARATS
Color Grade	E
Clarity Grade	VS 2
Cut Grade	IDEAL

### ADDITIONAL GRADING INFORMATION

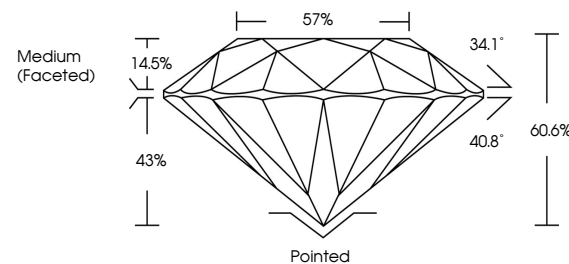
Polish	EXCELLENT
Symmetry	EXCELLENT
Fluorescence	NONE
Inscription(s)	 LG582365608

Comments: This Laboratory Grown Diamond was created by Chemical Vapor Deposition (CVD) growth process and may include post-growth treatment.  
Type IIa

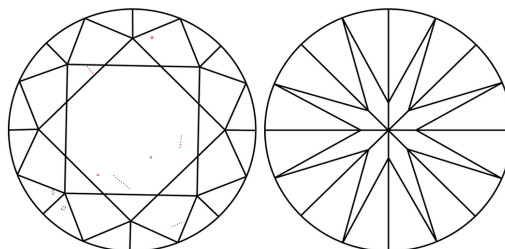
## LABORATORY GROWN DIAMOND REPORT

LG582365608  
Report verification at [lgi.org](https://lgi.org)

## PROPORTIONS



## CLARITY CHARACTERISTICS



## KEY TO SYMBOLS

Red symbols indicate internal characteristics.  
Green symbols indicate external characteristics.

LABORATORY GROWN  
DIAMOND REPORT

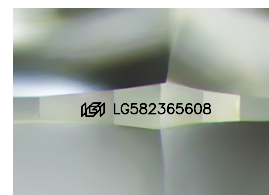
## GRADING SCALES

## CLARITY

IF	VVS <sup>1-2</sup>	VS <sup>1-2</sup>	SI <sup>1-2</sup>	I <sup>1-3</sup>
Internally Flawless	Very Very Slightly Included	Very Slightly Included	Slightly Included	Included

**COLOR**

D E F G H I J Faint Very Light Light



Sample Image Used



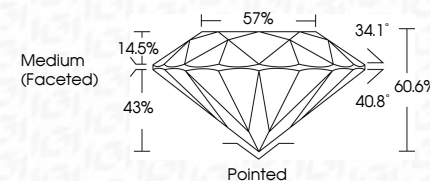
© IGI 2020, International Gemological Institute

FD - 10 20

**www.igi.org**

## LABORATORY GROWN DIAMOND REPORT

May 18, 2023	
IGI Report Number	LG582365608
Description	LABORATORY GROWN DIAMOND
Shape and Cutting Style	ROUND BRILLIANT
Measurements	14.55 - 14.61 X 8.84 MM
GRADING RESULTS	
Carat Weight	11.40 CARATS
Color Grade	E
Clarity Grade	VS 2
Cut Grade	IDEAL



### ADDITIONAL GRADING INFORMATION

Polish	EXCELLENT
Symmetry	EXCELLENT
Fluorescence	NONE
Inscription(s)	 LG582365608

Comments: This Laboratory Grown Diamond was created by Chemical Vapor Deposition (CVD) growth process and may include post-growth treatment.  
Type IIa



IG

May 18, 2023	14.95 - 14.61 X 8.84 MM	Color Weight	11.40 CARATS	Vs 2	Polished	Comments: This Crown Diamond was created by Chemical Vapor Deposition (CVD) growth process and may include post-growth treatment.
GJ Report No. US59235508	Color Grade	Darfy Grade	IDEAL	66%	EXCELLENT	
YOUNG BRILLIANT	Depth	Cut Grade	57%	Medium (Faceted)	NONE	
	Table	Grille			169 US59235508	
	Inscriptions(s)	Cluet				