

ELECTRONIC COPY

LABORATORY GROWN DIAMOND REPORT

March 21, 2023	
IGI Report Number	LG574321544
Description	LABORATORY GROWN DIAMOND
Shape and Cutting Style	CUT CORNERED RECTANGULAR MODIFIED BRILLIANT
Measurements	14.21 X 9.99 X 6.69 MM

GRADING RESULTS

Carat Weight	8.50 CARATS
Color Grade	G
Clarity Grade	VS 2

ADDITIONAL GRADING INFORMATION

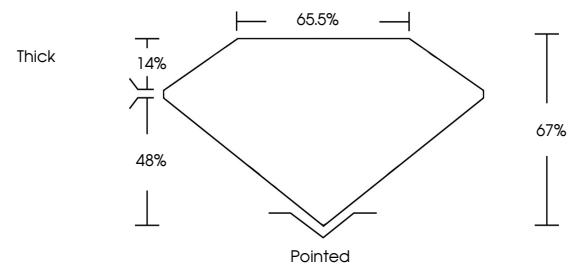
Polish	EXCELLENT
Symmetry	EXCELLENT
Fluorescence	NONE
Inscription(s)	 LG574321544

Comments: This Laboratory Grown Diamond was created by Chemical Vapor Deposition (CVD) growth process and may include post-growth treatment.
Type IIa

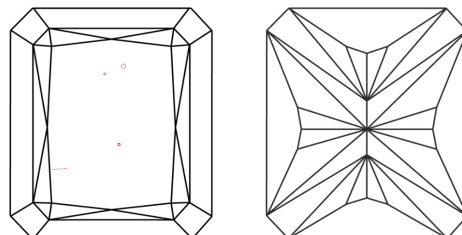
LABORATORY GROWN DIAMOND REPORT

LG574321544
Report verification at igi.org

PROPORTIONS



CLARITY CHARACTERISTICS



KEY TO SYMBOLS

Red symbols indicate internal characteristics.
Green symbols indicate external characteristics.

LABORATORY GROWN
DIAMOND REPORT

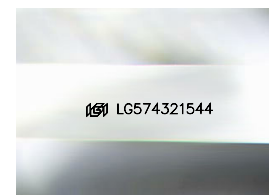
GRADING SCALES

CLARITY

IF	VVS ¹⁻²	VS ¹⁻²	SI ¹⁻²	I ¹⁻³
Internally Flawless	Very Very Slightly Included	Very Slightly Included	Slightly Included	Included

COLOR

D E F G H I J Faint Very Light Light



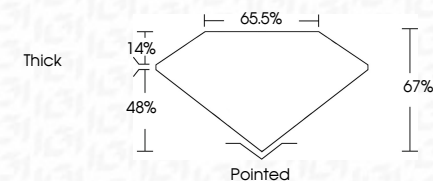
Sample Image Used

LABORATORY GROWN DIAMOND REPORT

March 21, 2023	
IGI Report Number	LG574321544
Description	LABORATORY GROWN DIAMOND
Shape and Cutting Style	CUT CORNERED RECTANGULAR MODIFIED BRILLIANT
Measurements	14.21 X 9.99 X 6.69 MM

GRADING RESULTS

Carat Weight	8.50 CARATS
Color Grade	G
Clarity Grade	VS 2



ADDITIONAL GRADING INFORMATION

Polish	EXCELLENT
Symmetry	EXCELLENT
Fluorescence	NONE
Inscription(s)	163 LG574321544

Comments: This Laboratory Grown Diamond was created by Chemical Vapor Deposition (CVD) growth process and may include post-growth treatment.
Type IIa



© IGI 2020, International Gemological Institute

FD - 10 20

www.igi.org

THIS DOCUMENT WAS PRODUCED WITH THE FOLLOWING SECURITY MEASURES: SPECIAL DOCUMENT PAPER, INK SCREENS, WATERMARK, BACKGROUND DESIGNS, HOLOGRAM AND OTHER SECURITY FEATURES NOT LISTED AND DO EXCEED DOCUMENT SECURITY INDUSTRY GUIDELINES

March 21, 2023	GI Report No. LG574321544
CUT CORNERED RECT. MODIFIED BRILLIANT	
14.31 x 9.99 x 6.69 MM	
Color Weight	
Color Grade	8.50 CABATS
Clarity Grade	VS 2
Depth	67%
Table	65.5%
Girdle	Thick
Fluorescence	None
Symmetry	Excellent
Polarization	Excellent
Measurements (mm)	6.69 LG574321544

Comments: This is a very clean Diamond was treated by Chemical Vapor Deposition (CVD) growth process and may include post-growth treatment.

Type IIA