



ELECTRONIC COPY

LABORATORY GROWN DIAMOND REPORT

October 13, 2022	
IGI Report Number	LG551278987
Description	LABORATORY GROWN DIAMOND
Shape and Cutting Style	EMERALD CUT
Measurements	8.68 X 6.02 X 4.09 MM

GRADING RESULTS

Carat Weight	2.08 CARATS
Color Grade	F
Clarity Grade	SI 1

ADDITIONAL GRADING INFORMATION

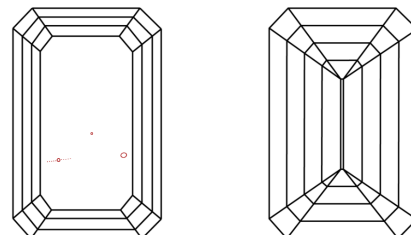
Polish	EXCELLENT
Symmetry	EXCELLENT
Fluorescence	NONE

Inscription(s) **LABGROWN  LG551278987**
 Comments: This Laboratory Grown Diamond was created by Chemical Vapor Deposition (CVD) growth process and may include post-growth treatment.
 Type IIa

Diagram illustrating the proportions of a diamond-shaped gemstone, labeled LG551278987. The diagram shows a diamond shape with the following proportions:

- Top width: 66%
- Left side length: 14.5%
- Bottom width: 51%
- Right side length: 67.9%
- Overall shape description: Medium To Slightly Thick
- Orientation: Long

CLARITY CHARACTERISTICS

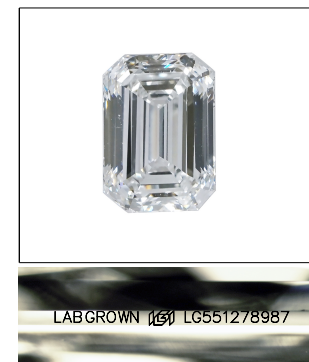


KEY TO SYMBOLS

Red symbols indicate internal characteristics.
Green symbols indicate external characteristics.

GRADING SCALES

COLOR GRADING SCALE	CL		NC		FT		VLT		LT	
	COLORLESS D-F		NEAR COLORLESS G-J		FAINT K-M		VERY LIGHT N-R		LIGHT S-Z	
CLARITY (10x) GRADING SCALE	FL	IF	VVS		VS		SI		I	
	FLAWLESS INTERNALLY FLAWLESS		VERY VERY SLIGHTLY INCLUDED		VERY SLIGHTLY INCLUDED		SLIGHTLY INCLUDED		INCLUDED	

LASERSCRIBESM

Sample Image Used

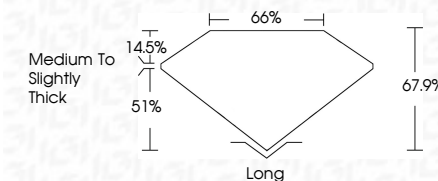


© IGI 2020, International Gemological Institute

FD - 10 20

LABORATORY GROWN DIAMOND REPORT

October 13, 2022	
IGI Report Number	LG551278987
Description	LABORATORY GROWN DIAMOND
Shape and Cutting Style	EMERALD CUT
Measurements	8.68 X 6.02 X 4.09 MM
GRADING RESULTS	
Carat Weight	2.08 CARATS
Color Grade	F
Clarity Grade	SI 1



ADDITIONAL GRADING INFORMATION

Polish	EXCELLENT
Symmetry	EXCELLENT
Fluorescence	NONE
Inscription(s)	LABGROWN (15) LG551278987

Comments: This Laboratory Grown Diamond was created by Chemical Vapor Deposition (CVD) growth process and may include post-growth treatment.
Type IIa

[illegible]