



**ELECTRONIC COPY**

## LABORATORY GROWN DIAMOND REPORT

October 17, 2022	
IGI Report Number	LG551207996
Description	LABORATORY GROWN DIAMOND
Shape and Cutting Style	OVAL BRILLIANT
Measurements	15.78 X 10.83 X 6.82 MM

## GRADING RESULTS

Carat Weight	7.24 CARATS
Color Grade	F
Clarity Grade	SI 1

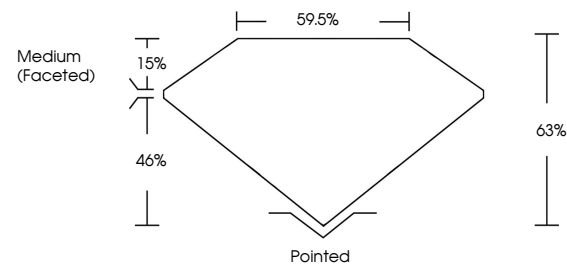
### ADDITIONAL GRADING INFORMATION

Polish	EXCELLENT
Symmetry	EXCELLENT
Fluorescence	NONE

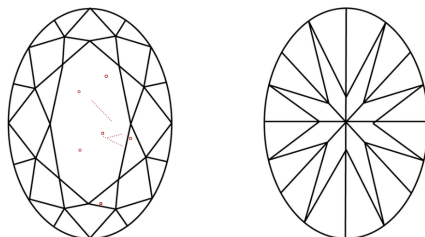
Inscription(s) **LABGROWN  LG551207996**  
 Comments: This Laboratory Grown Diamond was created by Chemical Vapor Deposition (CVD) growth process and may include post-growth treatment.  
 Type IIa

LG551207996

## PROPORTIONS



## CLARITY CHARACTERISTICS

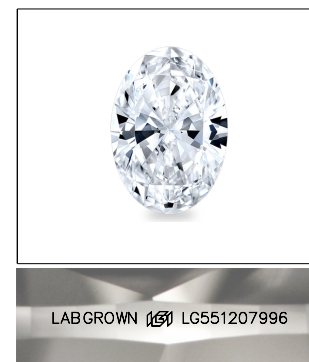


## KEY TO SYMBOLS

Red symbols indicate internal characteristics.  
Green symbols indicate external characteristics.

## GRADING SCALES

COLOR GRADING SCALE	CL		NC		FT		VLT		LT	
	COLORLESS D-F		NEAR COLORLESS G-J		FAINT K-M		VERY LIGHT N-R		LIGHT S-Z	
CLARITY (10x) GRADING SCALE	FL IF		VVS		VS		SI		I	
	FLAWLESS INTERNALLY FLAWLESS		VERY VERY SLIGHTLY INCLUDED		VERY SLIGHTLY INCLUDED		SLIGHTLY INCLUDED		INCLUDED	

LASERSCRIBE<sup>SM</sup>

Sample Image Used

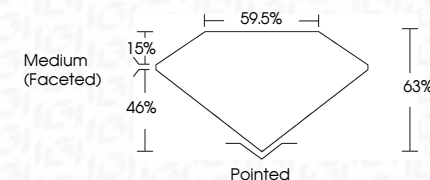


© IGI 2020, International Gemological Institute

FD - 10 20

LABORATORY GROWN DIAMOND REPORT

October 17, 2022	
IGI Report Number	LG551207996
Description	LABORATORY GROWN DIAMOND
Shape and Cutting Style	OVAL BRILLIANT
Measurements	15.78 X 10.83 X 6.82 MM
<b>GRADING RESULTS</b>	
Carat Weight	7.24 CARATS
Color Grade	F
Clarity Grade	SI 1



### ADDITIONAL GRADING INFORMATION

Polish	EXCELLENT
Symmetry	EXCELLENT
Fluorescence	NONE
Inscription(s)	LABGROWN (15) LG551207996

Comments: This Laboratory Grown Diamond was created by Chemical Vapor Deposition (CVD) growth process and may include post-growth treatment.  
Type IIa



<b>Date:</b>	October 17, 2022
<b>G# / Report No.</b>	LG651207956
<b>Cut/Color Grade</b>	SI 1 GSI
<b>Weight</b>	6.82 MM
<b>Measurements</b>	16.78 x 10.83 x 6.82 MM
<b>Comments:</b>	This Laboratory Grown Diamond was grown from a CVD growth process and may include post-growth treatment. Type IIA

This Laboratory Grown Diamond was created by Chemical Vapor Deposition (CVD) growth process and may include post-growth treatment.